



# REPEL<sup>®</sup>

## REALM

ZONE MOSQUITO REPELLENT

**EFFECTIVE PROTECTION**



# REPEL<sup>®</sup>

## REALM

ZONE MOSQUITO REPELLENT

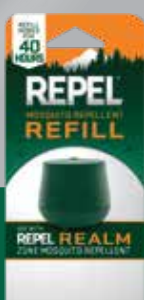
**THIS PACKAGE CONTAINS:**



1 - 40-Hour Refill

1 - REPEL<sup>®</sup> Realm Zone Mosquito Repellent Device

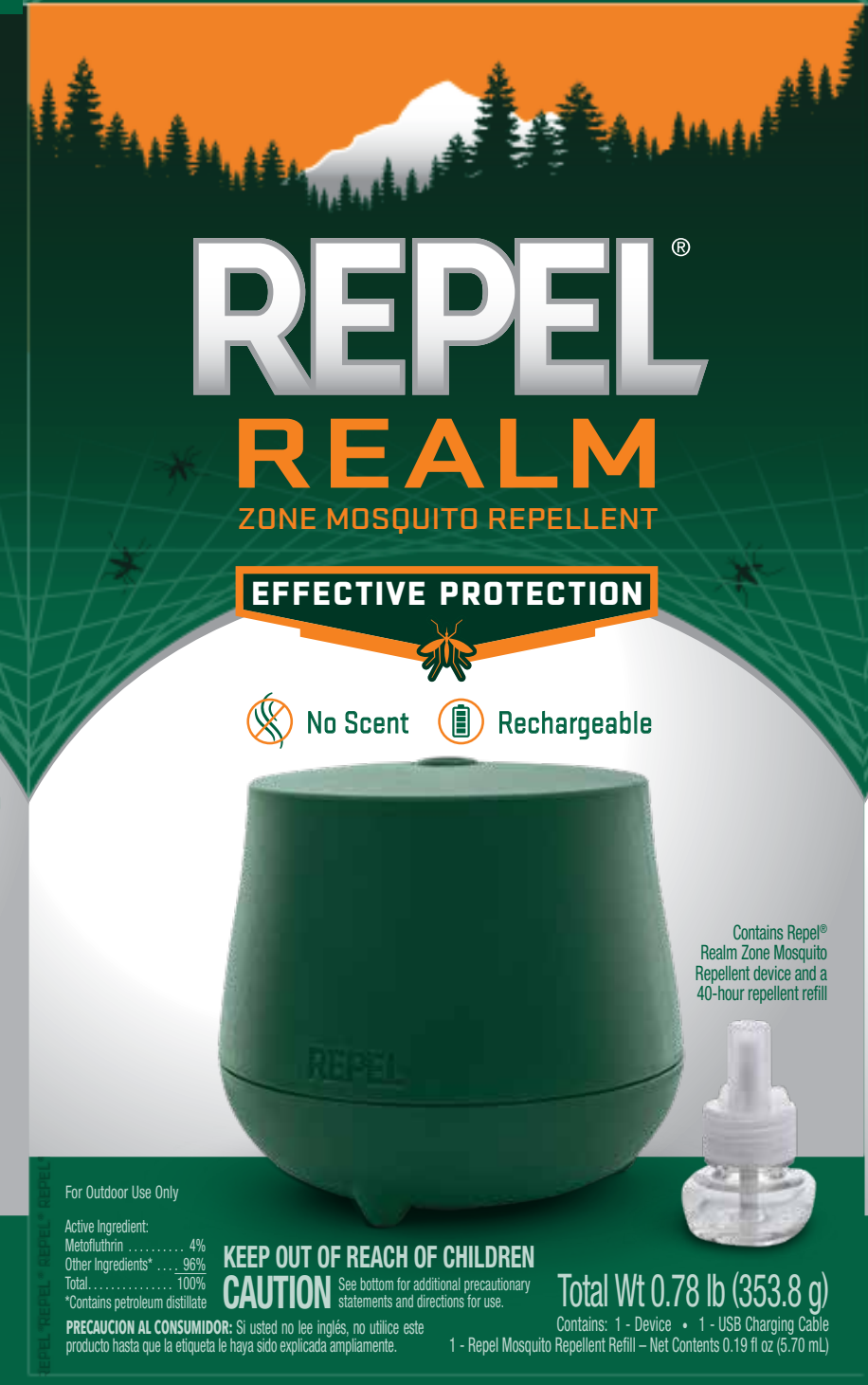
1 - USB Charging Cable



PROOF OF PURCHASE

FPO UPC  
0 11423 94260 0

**AVAILABLE IN 40-HOUR REFILLS**



# REPEL<sup>®</sup>

## REALM

ZONE MOSQUITO REPELLENT

**EFFECTIVE PROTECTION**



 **No Scent**  **Rechargeable**

Contains Repel<sup>®</sup> Realm Zone Mosquito Repellent device and a 40-hour repellent refill

For Outdoor Use Only

Active Ingredient:  
 Metofluthrin ..... 4%  
 Other Ingredients\* ..... 96%  
 Total ..... 100%  
 \*Contains petroleum distillate

**KEEP OUT OF REACH OF CHILDREN**  
**CAUTION** See bottom for additional precautionary statements and directions for use.

**Total Wt 0.78 lb (353.8 g)**  
 Contains: 1 - Device • 1 - USB Charging Cable  
 1 - Repel Mosquito Repellent Refill - Net Contents 0.19 fl oz (5.70 mL)

**IMPORTANT: READ ENTIRE LABEL BEFORE USE.**

**DIRECTIONS FOR USE**

It is a violation of Federal law to use this product in a manner inconsistent with its labeling. See insert for additional Directions for Use.

**STORAGE AND DISPOSAL**

Do not contaminate water, food or feed by storage and disposal of repellent unit.  
**PESTICIDE STORAGE:** Store in a cool, dry place. Keep container tightly closed. Store refills out of direct sunlight.  
**PESTICIDE DISPOSAL AND CONTAINER HANDLING:** Nonrefillable bottle. Do not reuse or refill this bottle.  
 If empty: Place in trash or offer for recycling if available. If partly filled: Use remaining product according to label directions for use or call your local solid waste agency for disposal instructions. Never place unused product down any indoor or outdoor drain.

**FIRST AID**

**IF SWALLOWED:**

- Immediately call a Poison Control Center or doctor.
- Do not induce vomiting unless told to do so by a Poison Control Center or doctor.
- Do not give any liquid to the person.
- Do not give anything by mouth to an unconscious person.

**HOTLINE NUMBER**

Have the product container or label with you when calling a Poison Control Center or doctor, or going for treatment. In case of medical emergencies or health and safety inquiries, or in case of fire, leaking or damaged containers, information may be obtained by calling 1-800-633-2873.

**NOTE TO PHYSICIAN**

Contains petroleum distillate - vomiting may cause aspiration pneumonia.

**PRECAUTIONARY STATEMENTS**

**HAZARDS TO HUMANS AND DOMESTIC ANIMALS**  
**CAUTION.** Harmful if swallowed. Wash hands thoroughly with soap and water after handling and before eating, drinking, chewing gum, using tobacco or using the toilet.  
**ENVIRONMENTAL HAZARDS**  
 Do not apply to directly to water, or to areas where surface water is present or to intertidal areas below the mean high-water mark. Do not contaminate water when disposing of equipment washwaters or rinsate.

**NOTICE:** To the extent consistent with applicable law, buyer assumes all responsibility for safety and use not in accordance with directions. Questions or Comments? Call 1-888-880-1181 or visit our website at [www.repel.com](http://www.repel.com)

Chemsico, a Division of United Industries Corporation, PO Box 142642, St. Louis, MO 63114-0642  
 EPA Reg. No. 9688-356 EPA Est. Nos. 97567-MO-1 (T), 91284-MO-1 (R) Circled letter is first letter of lot number. 16-14009  
 © 2022 United Industries Corporation. All Rights Reserved.

**1 YEAR**  
LIMITED  
WARRANTY  
SEE ENCLOSED DETAILS

## HIGH-TECH MOSQUITO REPELLENT DEVICE

REPEL MOSQUITOES WITH THE PUSH OF A BUTTON

PROTECTION IN AS FAST AS 15 MINUTES

ALLOWS YOU TO CONNECT WITH NATURE



### PERFECT FOR:

PATIOS • DECKS • OUTDOOR GATHERINGS

# REPEL<sup>®</sup>

## REALM

ZONE MOSQUITO REPELLENT

PROVIDES AN AREA OF  
PROTECTION FOR OUTDOOR ENTERTAINING

CONTINUOUSLY OPERATES FOR UP TO  
5.5 HOURS PER CHARGE

- SIMPLE AND EASY TO USE
- INVISIBLE PROTECTION
- NO OPEN FLAME



AVAILABLE  
IN 40-HOUR  
REFILLS



1 - USB  
Charging Cable



1 - 40-Hour Refill



1 - REPEL® Realm  
Zone Mosquito  
Repellent Device

This Package Contains:

# REPEL®

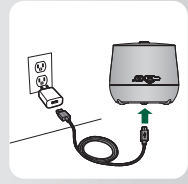
## REALM

ZONE MOSQUITO REPELLENT

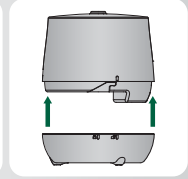
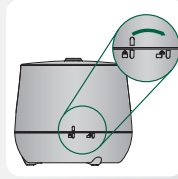
QUICK START  
**GUIDE**



- 1** Charge device before initial use.  
*Charging block not included.*

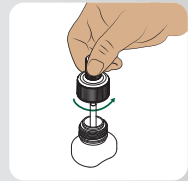


- 2** Twist, unlock and remove the cover.



- 3** Remove pull tab.

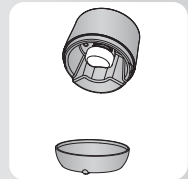
- 4** Remove the cap from the refill.



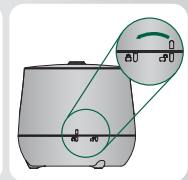
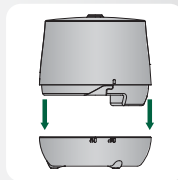
- 5** Turn repellent bottle as shown.



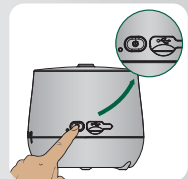
- 6** Insert the bottle into the device until it clicks in.



- 7** Replace cover, twist to lock in place.



- 8** Press and hold ON button for 3-5 seconds.



**IMPORTANT: READ ENTIRE LABEL BEFORE USE.**

**For Outdoor Use Only**

## **DIRECTIONS FOR USE**

It is a violation of Federal law to use this product in a manner inconsistent with its labeling.

Do not use indoors.

Do not pry repellent bottle open.

Place one device every 10 to 12 ft around the area you wish to protect.

Use outdoors on patios, decks, unenclosed porches, walkways and other areas where mosquito protection is desired. For coverage for a deck or patio, place one device every 10 to 12 ft around the area you wish to protect.

Do not use or leave the device in conditions where temperatures are below 40°F or exceed 110°F.

Always pick up the device by the base, not by the cover.

Let the device run for 15 minutes to establish complete protection.

Operate only with the device standing upright.

Turn off the device when not in use.

Prior to transporting or storing the device, remove the repellent bottle and replace the repellent bottle cap.

The claimed hours of repellency are an average based on lab testing and are presumed using 90% of repellent provided. The last 10% of repellent is not claimed, as repellency effectiveness may diminish with reduced wick exposure. Your repellent usage rate will vary based on the temperature and relative humidity.

## **OPERATING INSTRUCTIONS:**

### **UNLOCK THE DEVICE FROM LOCK MODE**

1. The device is locked to prevent accidental powering on during transport/storage.

2. To unlock the device from lock mode:

- Remove the cover of the device
- Remove the pull tab to deactivate lock mode

### **INSERT REPELLENT BOTTLE**

1. Insert repellent bottle only when device is turned OFF.

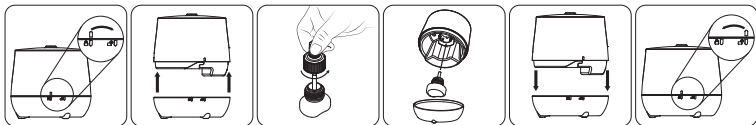
2. Open the device by unlocking the cover and pulling it up and off. Rotate the cover clockwise to LOCK / Rotate counterclockwise to UNLOCK. Do not pry open the device.

3. Remove cap from repellent bottle. Retain the repellent bottle cap for future use.

4. Insert the repellent bottle into the device. Repellent bottle will snap into place when properly inserted.

5. Replace the cover and rotate into the LOCK position to close the device.

**NOTE: DEVICE WILL NOT REPEL MOSQUITOES UNLESS REPELLENT BOTTLE IS PROPERLY INSERTED.**



### **OPERATING DEVICE**

1. To turn ON, press and hold the POWER button for 2 seconds. LED light will turn on.

2. To turn OFF, press the POWER button. LED light will turn off.



## **STATUS LIGHT FUNCTION DESCRIPTIONS**

### **DEVICE IS ON, BUT NOT CONNECTED TO EXTERNAL POWER:**

**Blinking Green** – Once device is unlocked, LED will flash green 3 times.

**Blinking Red** – Battery voltage good for at least 1 hour of use.

**Solid Red** – Battery voltage sufficient only for a few minutes of use, indicating that recharge is needed.

**Solid Green** – Device on.

### **WHEN CONNECTED TO EXTERNAL POWER (WHEN DEVICE IS OFF):**

**Blinking Green** – Charging.

**Solid Green** – Fully charged.

## **REPLACING THE REPELLENT BOTTLE**

• Replace repellent bottle when liquid is no longer visible in the bottle.

• Do not attempt to refill the repellent bottle.

• The repellent bottle and wick will get hot while in use. Always allow repellent bottle and wick to cool before replacing the repellent bottle. Do not touch or break the wick.

• Replace the repellent bottle only when power to the device is turned off.

• Do not insert anything other than Repel® Mosquito Repellent Refill (HG-94261) in the device.

**Only use Repel Mosquito Repellent Refill in this device.**

Active Ingredient:  
Metofluthrin.....4%  
Other.....96%  
Total.....100%

**KEEP OUT OF  
REACH OF CHILDREN**

**CAUTION** See packaging  
for additional precautionary  
statements, first aid, directions  
for use and storage and disposal.

EPA Reg. No. 9688-356      EPA Est. Nos. 91284-MO-1 (CR),  
97567-MO-1 (CT)      Circled letter is first letter of lot number.

Chemisco, a Division of United Industries Corporation  
PO Box 142642, St. Louis, MO 63114-0642      17-18779

**Net Contents 0.19 fl oz**