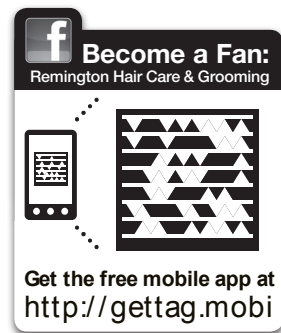


# REMINGTON®



BHT-300

## Use and Care Guide

### Register Your New Product Today!

By registering your new Remington® product, you will receive these important benefits: Proof of Ownership • Product Protection • Product Registration • Special Offers  
Register online at: [www.RemingtonProducts.com](http://www.RemingtonProducts.com)

## IMPORTANT SAFETY INSTRUCTIONS

When using an electrical appliance, basic precautions should always be observed, including the following.

### READ ALL INSTRUCTIONS BEFORE USING THIS APPLIANCE.

### DANGER

To reduce the risk of electric shock:

- Do not reach for an appliance that has fallen into water while plugged into charger unit. Unplug it immediately.
- Detach the appliance from the power supply cord before cleaning.
- Do not place or drop appliance while plugged into charger unit or drop charger unit into water or other liquid.
- Do not place or store this appliance while plugged into charger unit or place charger unit where it can fall or be pulled into a tub or sink.
- Except when charging, always unplug this appliance from the electrical outlet immediately after using.
- Unplug this appliance before cleaning it.

- Do not use an extension cord with this appliance.
- Charger unit is not for immersion in the bathtub.
- Do not submerge appliance in water.

### WARNING

To reduce the risk of burns, fire, electric shock or injury to persons:

- This appliance is for household use only.
- An appliance should never be left unattended when it is plugged in, except when charging a rechargeable appliance.
- Close supervision is necessary when this appliance is used by, on, or near children or persons with certain disabilities or special needs.
- Use this appliance only for its intended use as described in this manual.
- Do not use attachments not recommended by Spectrum Brands, Inc.
- Keep the appliance, cord and charger unit away from heated surfaces.

## SAVE THESE INSTRUCTIONS

- Never operate this appliance if it has a damaged cord or plug, if it is not working properly, if it has been dropped or damaged, or if it has been submerged under water.
- Never drop or insert any object into any of the appliance's openings.
- Do not use outdoors or operate where aerosol (spray) products are being used, or where oxygen is being administered.
- Always store this appliance and cord in a moisture-free area. Do not store it in temperatures exceeding 140°F (60°C).
- Make sure the cord is disconnected from the appliance when storing.
- Do not use this appliance with damaged or broken foils, cutters or trimmers as injury may occur. Always make sure blades are aligned properly.
- Always attach plug to appliance, then adapter to outlet. To disconnect, turn all controls to OFF, remove adapter from outlet, then detach power cord from the trimmer for storage.
- Do not use a voltage converter with this appliance.
- Do not wrap the cord around the appliance.
- The power unit is intended to be correctly oriented in a vertical or floor mount position.

## Product Features

### Body Contour Groomer

The BHT-300 can be used on all parts of the body where you would like to trim or shave your body hair. Read all instructions before using this groomer.

### Groomer Parts

- (A) ON/OFF Switch
- (B) Shaving Head with Bi-directional trimmer system
- (C) Guide Combs (1.3mm, 2.5mm)
- (D) Charging Indicator Light
- (E) Charging Adaptor



## How to Use

Please refer to the safety instructions and warnings at the front of this manual before operating this product.

### Charging the BHT-300

Before using the groomer for the first time, it must charge for 14-16 hours.

- Make sure the groomer is turned off.
- Connect the cord to the unit, then plug the charging adapter into the electrical outlet. A charging indicator will light up.
- Your groomer cannot be overcharged so you can leave it plugged in and charged between uses, but if the unit is not going to be used for an extended period of time (2-3 months) unplug it and fully recharge when you want to use it again.
- Only use the charging adapter supplied with the unit.
- Charging should be done at a temperature between 4°C and 35°C, or it could decrease the battery's life.

- To preserve the life of the batteries, let them run out every 6 months, then recharge them for 24 hours.

### Take a moment

Be patient when first using your BHT-300. As with any new product, it may take a little while to familiarize yourself with it, especially if you are using a groomer for the first time or are using a different brand. Take the time to acquaint yourself with your new groomer, as we are confident you will receive years of enjoyable use and complete satisfaction.

### Guide Combs

The text on the comb indicates the length which the hair will be cut (1.3mm, 2.5mm). To attach, gently slide the guide comb on top of the trimmer head and click into position. To remove, carefully lift the side of the comb away from the trimmer head.

## Trimming

- Attach a guide comb to the trimmer head.
- Turn the unit on.
- Place the flat top of the trimmer comb against the skin.
- Slowly slide the trimmer through the hair, in the direction of hair growth.
- If hair builds up in the guide comb during the trimming process, switch the unit off and pull off the guide comb. Brush trimmer/rinse comb.

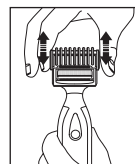
## Using the Shaver

- Hold the shaving head to your skin.
- Stretch your skin with your free hand so hairs stand upright.
- Only apply light pressure on the shaving head while shaving.
- Shave against hair growth.

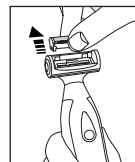
## Cleaning and Maintenance

Care for your product to ensure long lasting performance. We recommend you clean your groomer after each use. The easiest and the most hygienic way to clean the groomer is by rinsing the product head after use with warm water. Always keep the trimmer in the "off" position when not in use.

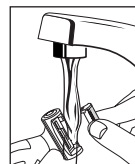
### After Each Use



- Turn Trimmer off.



- Remove the guide comb.

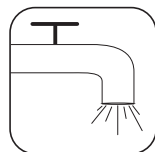


- Remove the blade and trimmer assembly by placing your fingers on either side of the assembly and pulling upwards.
- Gently shake the blade and trimmer assembly to remove the hair. Brush/rinse the trimmers and shaver housing.
- Replace the blade and trimmer assembly.

**NOTE:** Never use the cleaning brush on the foil as damage may occur.

## Cleaning Cautions

- Cleaning should only be done with a soft brush, such as the brush supplied with the product.
- Do not use harsh or corrosive cleaners on the units or their cutters.
- Do not apply pressure or hard objects to cutters.
- Do not disassemble cutter assembly.
- Do not submerge unit in water as damage will occur.
- The hand-held unit should be detached from the power supply cord before cleaning.



**This groomer is a wet/dry product. It may be used in or out of the shower and rinsed with water.**

## Storage

- Always store this appliance and cord in a moisture-free area. Do not store it in temperatures exceeding 140° F (60°C).
- Do not wrap the cord of the charging adaptor around the appliance.

## US Residents:

To order accessories, contact us at 800-392-6544, visit us at [www.RemingtonProducts.com](http://www.RemingtonProducts.com), or visit your local retailer.

## Canadian Residents:

To order accessories, please call 800-268-0425 or visit us at [www.RemingtonProducts.com](http://www.RemingtonProducts.com)

## Troubleshooting

### ? If the cutters do not move

The cutting unit may be dirty and clogged. Clean the unit as described on page 7.

### ? If the groomer does not work when turned on

It may simply need charging. Follow the instructions for charging on page 5.

### ? If the groomer does not hold a charge

Fully discharge the BHT-300 by running it until it stops. Then follow the recharging instructions on page 5.

**Note:** This appliance does not contain any user-serviceable parts.

## Performance Guarantee

## Limited Two-Year Warranty

Spectrum Brands, Inc. warrants this product against any defects that are due to faulty material or workmanship for a two-year period from the original date of consumer purchase. This warranty does not include damage to the product resulting from accident or misuse.

If the product should become defective within the warranty period, we will replace it free of charge. Return your product and sales receipt with your name, address and day time phone number to: Remington Returns Center, 507 Stokely Dr., P.O. Box 1, Deforest, WI 53532. For more information call 800-736-4648 in the US or 800-268-0425 in Canada.

**KEEP ORIGINAL SALES RECEIPT AS PROOF OF PURCHASE FOR WARRANTY PURPOSES.**

This warranty does not cover products damaged by the following:

- Accident, misuse, abuse or alteration of the product
- Servicing by unauthorized persons
- Use with unauthorized accessories
- Connecting it to incorrect current and voltage
- Wrapping cord around appliance causing premature wear & breakage
- Any other conditions beyond our control

**SPECTRUM BRANDS, INC. SHALL NOT BE RESPONSIBLE FOR ANY INCIDENTAL, SPECIAL OR CONSEQUENTIAL DAMAGES RESULTING FROM THE USE OF THIS PRODUCT. ALL IMPLIED WARRANTIES, INCLUDING BUT NOT LIMITED TO IMPLIED WARRANTIES OF FITNESS AND MERCHANTABILITY, ARE LIMITED IN DURATION TO TWO YEARS FROM DATE OF ORIGINAL PURCHASE.**

This warranty gives you specific legal rights and you may also have other rights which vary from state to state or province to province. Some states do not allow the exclusion or limitation of incidental, special or consequential damages.

## Spectrum Brands, Inc. Money-back Offer

If within 30 days after you have purchased your Remington® branded product you are not satisfied and would like a refund, return it with the sales slip indicating purchase price and date of purchase to the retailer from whom it was purchased. Spectrum Brands, Inc. will reimburse all retailers who accept the product within 30 days from the date of purchase. If you have any questions concerning the money-back guarantee, please call 800-736-4648 in the US or 800-268-0425 in Canada.

120 VAC 60Hz

## Questions or comments:

Call 800-736-4648 in the US or 800-468-0425 in Canada or visit [www.RemingtonProducts.com](http://www.RemingtonProducts.com)

© Registered Trademark of ROVICAL, Inc., a subsidiary of Spectrum Brands, Inc.

©2011 ROVICAL, Inc.  
11/11 Job# CS42597

Dist. by:  
Spectrum Brands, Inc.,  
Madison, WI 53711

Spectrum Brands Canada, Inc.  
4180 Sladeview Crescent.  
Mississauga, ON L5L 0A1

Manufactured to Remington's specifications in the PRC.

T22-33810

Contains a



listed adapter.