

# REMINGTON®

## EASY FADE HAIRCUT KIT

Use and Styling Guide  
HC4060



### Register Your New Product Today!

By registering your new Remington® product, you will receive special offers.  
Register online at: [RemingtonProducts.com](http://RemingtonProducts.com)

## IMPORTANT SAFETY INSTRUCTIONS

When using an electrical appliance, basic precautions should always be observed, including the following. Read all instructions before using this appliance.

### DANGER

To reduce the risk of electric shock:

- Do not reach for an appliance that has fallen into water. Unplug it immediately.
- Do not use while bathing or in the shower.
- Do not place in or drop into water or other liquid.
- Do not place or store this appliance where it can fall or be pulled into a tub or sink.
- Always unplug this appliance from the electrical outlet immediately after using.
- Unplug this appliance before cleaning it.

### WARNING

To reduce the risk of burns, fire, electric shock or injury to persons:

- This appliance is for household use only.
- An appliance should never be left unattended when it's plugged in.
- Close supervision is necessary when this appliance is used on or near children or persons with special needs.
- This appliance is not to be used by a child.
- Use this appliance only for its intended use as described in this manual. Do not use attachments not recommended by Spectrum Brands, Inc.
- Keep the cord away from heated surfaces.
- Never operate this appliance if it has a damaged cord or plug, if it is not working properly, if it has been dropped or damaged, or if it has been dropped into water. If any of these things happen, return the appliance to a Remington authorized service center for examination and repair.

- Never drop or insert any object into any of the appliance's openings.
- Do not use outdoors or operate where aerosol (spray) products are being used, or where oxygen is being administered.
- Always store this appliance and cord in a moisture-free area. Do not store it in temperatures exceeding 140°F (60°C).
- Do not plug or unplug this appliance when your hands are wet.
- Do not use an extension cord or a voltage converter with this appliance.
- Do not place this appliance on any surface while operating.
- This appliance has a polarized plug (one blade is wider than the other). As a safety feature, this plug will fit in a polarized outlet only one way. If the plug does not fit fully in the outlet, reverse the plug. If it still does not fit, contact a qualified electrician. Do not attempt to defeat this safety feature.
- Do not use this appliance with a damaged or broken cutting unit, as injury may occur. Always make certain blades are aligned properly.
- This clipper is designed for use with 120 Volts AC, 60 HZ electrical outlets. Do not connect the clipper to a higher voltage than indicated, as it may result in personal injury and/or damage to the clipper.

## SAVE THESE INSTRUCTIONS

## Product Features

Thank you for choosing Remington. Your clipper is designed to perform dependably and efficiently for years, helping you to maintain a range of hair styles.



### Components

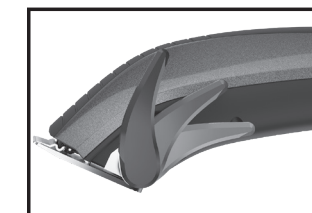
- |                            |                              |
|----------------------------|------------------------------|
| 1. Clipper                 | 12. Fade combs 3 mm–6 mm     |
| 2. Guide comb 1.5 mm       | 13. Fade combs 6 mm–9 mm     |
| 3. Guide comb 3 mm         | 14. Fade combs 9 mm–12 mm    |
| 4. Guide comb 6 mm         | 15. Fade combs 12 mm–16 mm   |
| 5. Guide comb 9 mm         | 16. Cape                     |
| 6. Guide comb 12 mm        | 17. Neck brush               |
| 7. Guide comb 16 mm        | 18. Blade oil                |
| 8. Guide comb 18 mm        | 19. Scissors                 |
| 9. Guide comb 22 mm        | 20. Blade protector          |
| 10. Guide comb 25 mm       | 21. Cleaning brush           |
| 11. Fade combs 1.5 mm–3 mm | 22. Storage case (not shown) |

## How to Use Clipper

### Line Cord Safety Tips

NOTE: This appliance has a polarized plug (one blade is wider than the other). As a safety feature, this plug will fit in a polarized outlet only one way. If the plug does not fit fully in the outlet, reverse the plug. If it still does not fit, contact a qualified electrician. Do not attempt to defeat this safety feature.

1. To insert plug, grasp it firmly and guide it into outlet.
2. To disconnect the appliance, grasp the plug and remove it from outlet. Do not pull or yank on the cord or appliance. **Do not wrap the cord around the appliance.**



### Taper Lever

Use the Taper Lever to add versatility to your hair cuts by changing the closeness of the blades gradually. The Taper Lever has 6 length options with the fully forward position providing the closest cut. Moving the lever gradually backward increases the length.

### Blade Care

The life of your clippers will depend on frequency of use, care, hair type, and condition. Use the cleaning brush to clean collected hair out of the blades as needed. To maintain the blades in peak condition, apply oil after every three to four haircuts. Place a drop of oil on each end and in the middle of the blade. Then, switch on to evenly distribute. Switch off. Then, wipe away excess oil.

### To Attach Guide Combs

1. Select the trimming guide that matches the length you want the hair to be after the cut. The trimming guides are numbered and marked with specific lengths. See preceding chart to determine which combs are included.
2. While the clipper is off, hold the guide comb with the teeth up. Hook the front edge of the comb to the teeth of the clipper blade. Then, push the back of the comb down until it snaps in place.

### To Remove Guide Combs

Pull small tab on rear of comb up and away from clipper.

## Styling Guide

1.5 mm  
#0, 1/16"



3 mm  
#1, 1/8"



6 mm  
#2, 1/4"



9 mm  
#3, 3/8"



12 mm  
#4, 1/2"



16 mm  
#5, 5/8"



18 mm  
#6, 3/4"



22 mm  
#7, 7/8"



25 mm  
#8, 1"



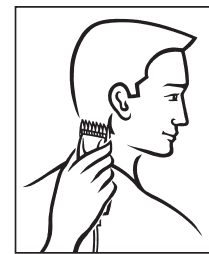
### Before Cutting Hair

1. Make sure your hair clipper is running smoothly, with a slight vibration.
2. Place a cape around the neck of the person whose hair is being trimmed or cut.
3. This person should be seated so that the top of his head is at your eye level.
4. Comb the hair as it is normally styled, removing all knots and tangles.
5. Ensure the hair is dry. Hair clippers perform best with dry hair, making it easier to see how much hair is being cut.
6. Hold the hair clipper in the palm of one hand with your thumb resting firmly on the top of the hair clipper. This grip provides comfortable cutting control. Although the hair clipper may be used with the left or right hand, using it right-handed allows you to access the taper lever more easily.



### Giving a Comfortable, Even Cut

Allow the clipper to cut through the hair at a moderate pace. Moving the clipper too quickly may result in discomfort or an inadequate cut. Use short strokes when cutting, starting with longer guide combs until you are comfortable with the length of the cut.



### How to Give a Haircut

1. Start at the back of the head. Holding the clipper as shown, lightly stroke upward making sure you are taking off the desired amount of hair. Work your way up to the crown of the head in layers. When completed, comb the area to remove any loose hair and to determine whether you need any further cutting.

2. Repeat the same procedure for each side of the head. Make sure the length of the hair is trimmed to the same length on both sides of the head.

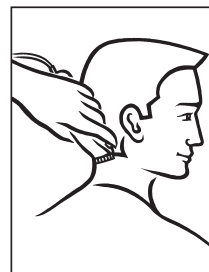


3. To cut the hair at the top of the head, hold the hair between your fingers and cut a small amount at a time. Cut from the front to the back.

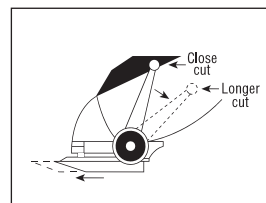
4. Remove the trimming guide and replace with either the left or right ear guide. The shorter guide teeth are designed to be toward the ear. Move the clipper from the front of the head to the back. This creates a tapered effect around the ears and back of the neck.

### Very short styles

1. Using the 12mm trimming guide, hold the comb flat against the head and move the hair clipper from the back of the neck to the crown of the head.
2. Cut in a similar manner from the side to the top of the head. Then cut from the front to the crown of the head.
3. If a "Flat Top" style is desired, then remove the trimming guide and use the barber's comb. Trim a little at a time until a flat look is achieved.



5. The final trim can be made with the hair clipper or the included scissors. Make sure to check over the entire head for any uneven areas. For styled hair or giving quick trims, you may prefer using your hair clipper without the trimming guide.



6. The adjustable taper control lever allows you to gradually change the closeness of your cut, either with or without a trimming guide. When the lever is fully forward the blades will give you the closest cut. Moving the lever gradually backward increases the cut length.

### Fade haircut

### Fade haircut

1. To use the fade combs to achieve a fade/blend hairstyle.
2. Select the fade comb that blends between two length settings chosen for your haircut and attach it to the clipper.



3. Move in a horizontal direction, either from the front to the back of the head or back to front of the head, blending the transition between the two different comb lengths. For example: if you choose a 9 mm length for the upper portion of the haircut and a 6 mm length comb for the middle portion of your haircut, then you would use the 6-9 mm fader/blend comb. Position the comb with larger length side of the comb facing towards the top of the head or longer length of the hair cut and the shorter length of the comb facing downwards or the shorter length of the haircut.

## Performance Guarantee

### Limited Five-Year Warranty

Spectrum Brands, Inc. warrants this product against any defects that are due to faulty material or workmanship for a five-year period from the original date of consumer purchase. This warranty does not include damage to the product resulting from accident or misuse.

If the product should become defective within the warranty period, we will replace it free of charge. Return your product and sales receipt with your name, address and day time phone number to: Remington Returns Center, 507 Stokely Dr., P.O. Box 1, DeForest, WI 53532. For more information call 800-736-4648 in the U.S. or Canada.

**KEEP ORIGINAL SALES RECEIPT AS PROOF OF PURCHASE FOR WARRANTY PURPOSES.** This warranty does not cover products damaged by the following:

- Accident, misuse, abuse or alteration of the product
- Servicing by unauthorized persons
- Use with unauthorized accessories
- Connecting it to incorrect current and voltage
- Any other conditions beyond our control

No responsibility, obligations, or liability is assumed for the installation or maintenance of this product.

**SPECTRUM BRANDS, INC. SHALL NOT BE RESPONSIBLE FOR ANY INCIDENTAL, SPECIAL OR CONSEQUENTIAL DAMAGES RESULTING FROM THE USE OF THIS PRODUCT. ALL IMPLIED WARRANTIES, INCLUDING BUT NOT LIMITED TO IMPLIED WARRANTIES OF FITNESS AND MERCHANTABILITY, ARE LIMITED IN DURATION TO FIVE YEARS FROM DATE OF ORIGINAL PURCHASE.**

This warranty gives you specific legal rights and you may also have other rights which vary from state to state or province to province. Some states do not allow the exclusion or limitation of incidental, special or consequential damages.

**This warranty shall not be valid where it is contrary to U.S. and other applicable laws, or where the warranty would be prohibited under any economic sanctions, export control laws, embargos, or other restrictive trade measures enforced by the United States or other applicable jurisdictions. This includes, without limitation, any warranty claims implicating parties from, or otherwise located in, Cuba, Iran, North Korea, Syria and the disputed Crimea region.**

### Spectrum Brands, Inc. Money-back Offer

If within 30 days after you have purchased your Remington® branded product from an authorized source, you are not satisfied and would like a refund, return it with the

sales receipt indicating purchase price and date of purchase to the retailer from whom it was purchased. Spectrum Brands, Inc. will reimburse all retailers who accept the product within 30 days from the date of purchase. If you have any questions concerning the money-back guarantee, please call 800-736-4648 in the U.S. or Canada.

### Remington Guarantees Satisfaction After 30 Days!

**Remington 60-Day Money Back Guarantee\***  
If within 60 days after purchasing any Remington® product, you are not completely satisfied and would like a refund, return it with the original dated sales receipt directly to Remington and receive a full refund.\*\* For questions concerning the money-back guarantee, please call 800-736-4648 in the U.S. or Canada.  
\*Applies to U.S. and Canadian customers' returns only.  
\*\*Terms and conditions apply.

1. Refund will be in the form of a check issued in U.S. Dollars and will be provided only if all Terms and Conditions are met.
2. The following items must be returned to Remington and postmarked no later than 60 days after purchase of the Remington® product:
  - a. The Remington® product;
  - b. The original sales receipt indicating price and date purchased; and
  - c. The completed 60-day money back guarantee form located at [RemingtonProducts.com/60day](http://RemingtonProducts.com/60day).
3. In addition, Remington, in its discretion, must determine that the returned product was used in accordance with the instruction booklet (included with the product at the time of purchase).
4. Returns should be mailed prepaid (no collect returns accepted) to:  
Remington 60-Day MBG  
507 Stokely Drive, Box 1  
DeForest, WI 53532
5. Refund does not include postage costs for the return of the product, but will include applicable taxes paid by customer, if any.
6. No responsibility will be accepted for late, lost, stolen, misdirected or damaged product.
7. Please allow 4–6 weeks to receive your refund by check.

**120 VAC 60 Hz** Type: HC06A  
Questions or comments: Call 800-736-4648 in the U.S. or visit [RemingtonProducts.com](http://RemingtonProducts.com).

Dist. by: Spectrum Brands, Inc., Middleton, WI 53562  
© Registered Trademark and TM Trademark of Spectrum Brands, Inc.  
© 2021 Spectrum Brands, Inc. All rights reserved. 8/21 28586

Made in China.  
T22-7002291-A

