

# REMINGTON®

---

**POWER**  
*series*

and

**Lithium**  
**POWER** *series*



## Use and Care Guide

PR1337, PR1342,  
PR1362, PR1387

### **Register Your New Product Today!**

By registering your new Remington® product, you will receive these important benefits:  
Proof of Ownership • Product Protection • Product Registration • Special Offers

Register online at: [RemingtonProducts.com](http://RemingtonProducts.com)

# IMPORTANT SAFETY INSTRUCTIONS

## SAVE THESE INSTRUCTIONS

When using an electrical appliance, basic precautions should always be observed, including the following. **Read all instructions before using this shaver.**

## DANGER

**TO REDUCE THE RISK OF FIRE OR ELECTRIC SHOCK, CAREFULLY FOLLOW THESE INSTRUCTIONS:**

- For connection of the power supply unit to a power source not in the U.S.A. and Canada, use an attachment plug adaptor of the proper configuration for the power outlet.
- Do not reach for a plugged in appliance that has fallen into water. Unplug it immediately.
- Do not use while bathing or in the shower (PR1337, PR1342, PR1362). Model PR1387 may be used in the shower.
- Model PR1337 can only be used in dry conditions. Do not rinse under the faucet to clean.
- Models PR1342 and PR1362 can only be used in dry conditions. The cutting head can be rinsed under the faucet for cleaning.
- Model PR1387 can be used wet or dry. The shaver can be used in the shower and rinsed under the faucet for cleaning.
- Detach the appliance from the power supply cord before cleaning.
- Do not submerge in water.
- Do not place or store this appliance where it can fall or be pulled into a tub or sink. Do not place or drop into water or other liquid.
- Except when charging, always unplug this appliance from the electrical outlet immediately after using.
- Unplug this appliance before cleaning.

# WARNING

---

## To reduce the risk of burns, fire, electric shock, or injury to persons:

- An appliance should never be left unattended when it's plugged in, except when charging a rechargeable appliance.
- Close supervision is necessary when this appliance is used by, on, or near children, or individuals with certain disabilities or special needs.
- Use this appliance only for its intended use as described in this manual. Do not use attachments not recommended by the manufacturer.
- Never operate this appliance if it has a damaged cord or plug or if it is not working properly, if it has been dropped or damaged, or if it has been dropped into water.
- Keep the cord away from heated surfaces.
- Never drop or insert any object into any of the appliance's openings.
- Household use only.
- Do not use outdoors or operate where aerosol (spray) products are being used or where oxygen is being administered.
- Always attach the plug to the appliance, then to outlet. To disconnect, turn all controls to OFF, then remove plug from outlet.
- Always pull on cord plug to unplug from wall socket. Never pull on electric cord.
- Do not plug or unplug this appliance when your hands are wet.
- Do not use an extension cord or a voltage converter with this appliance.
- Do not wrap the cord around the appliance.
- Always store this appliance and cord in a moisture-free area. Do not store it in temperatures exceeding 140°F (60°C).
- Detach removable power cords from appliance for storage.
- Do not use this appliance with a damaged or broken head or cutters, as facial injury may occur.
- The power unit is intended to be correctly oriented in a vertical or floor mount position.
- Shavers, including the trimmer, are for use on facial hair only. They should not be used for shaving the hair on your head or any other part of your body.

## Product Features



### SHAVER PARTS

1. PowerFlex 360° Pivoting head and cutter assembly
2. Head release button
3. Precision Plus Heads
4. On/Off push button
5. Charging indicator
6. Power port
7. Pop-up Trimmer
8. Power adaptor
9. Charge stand (PR1387)

Product may vary slightly from what is illustrated.

## Which Model Is Yours?

FEATURE	PR1337	PR1342	PR1362	PR1387
<b>POWER SYSTEM</b>	cordless	cordless	cord/ cordless	cordless
<b>FULL CHARGE TIME</b>	16 hrs.	4 hrs.	90 min.	90 min.
<b>CORDLESS SHAVE TIME</b>	40 min.	50 min.	60 min.	60 min.
<b>WATER RESISTANCE</b>	Dry	Washable	Washable	Wet/Dry
<b>QUICK CHARGE</b>	no	no	yes	yes
<b>INDICATORS</b>	charging	charging	3 stage LED	3 stage LED
<b>VOLTAGE TYPE</b>	worldwide	worldwide	worldwide	worldwide
<b>REPLACEMENT PART NO.</b>	SPR-PR13	SPR-PR13	SPR-PR13	SPR-PR13

\*Some shave times vary by version of each model.

To identify your model, refer to the packaging or on the back of the shaver.

### Power System

**Cordless** – shaver can only be used without the power cord.

**Cord/Cordless** – Shaver can be used with or without the power cord.

### Water Resistance

**Dry** – Shaver can only be used dry. Can be cleaned with cleaning brush.

**Washable** – Shaver can only be used dry. Can be cleaned by rinsing under running water.

**Wet/Dry** – Shaver can be used in the shower and with shaving gels. Can be cleaned by rinsing under running water.

### Quick Charge

Shaver will charge long enough for one shave in 5 minutes.

### Indicators

#### Charging Indicator – PR1337

■ Green LED light will glow solid during charging. Full Charge will take up to 16 hours. No indication of full charge.

#### Charging Indicator – PR1342

■ Green LED light will glow solid during charging. LED light will turn off at full charge.

#### 3 Stage LED – PR1362, PR1387

■ Blinks rapidly to signal low battery.

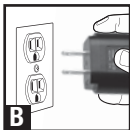
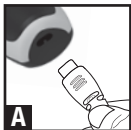
■ Slowly flashes to signal charging.

■ Solid green when fully charged, then turns off after 5 minutes.

### Voltage Type

**Worldwide Voltage** – Shaver automatically adapts to an outlet voltage between 100V and 240V.

## Charging



**Before using, read the important safety instructions in front of the manual.**

1. Plug power adaptor into shaver. (Diagram A)
2. Plug adaptor into wall outlet. (Diagram B)
3. Charge shaver for 24 hours before its first use. **Note:** During initial charge ignore the electronic indicators as they are in "start up cycle". (Diagram C)
4. For future charge times, see full charge time for your model on page 5.
5. Use shaver until recharge is required.

### For shavers equipped with a quick charge:

A 5 minute quick charge will allow for 3 minutes of shaving.

**NOTE:** Only model PR1362 can be used when the shaver is plugged into the adapter.

### CAUTION!

- Make sure the shaver and your hands are dry when charging the shaver.
- Always charge the shaver in a cool, dry place.

## Shaving

1. Press power button to turn on. (Diagram D)
2. Shave face and neck using short, circular strokes. (Diagram E)



## Trim



1. Pull trimmer release button to engage trimmer. (Diagram F)
2. Trim long, difficult hairs and side burns. (Diagram G)
3. Close trimmer by pressing down. (Diagram H)

## Shaving Tips (Dry)

- Wait at least 15 minutes after getting up before shaving, to ensure your face is free of puffiness that may be present from sleeping.
- Ensure your skin is dry and free of oils. Try using Remington's FaceSaver pre-shave powder to help the shaver glide across the skin.
- Always hold the shaver at a right angle to the skin so that all three heads are touching the skin with equal pressure.
- Stretch skin with the free hand so hairs stand upright, making it easier for them to enter the cutting chamber.
- Use moderate to slow circular stroking movement.
- The use of short circular motions in stubborn areas may obtain a closer shave, especially along the neck and chin line.
- Do not press hard against the skin in order to avoid damage to the rotary heads.

**We recommend that you use your new shaver daily for up to four weeks to allow time for your hair and skin to become accustomed to the new shaving system.**

## Shaving Tips With Gel or Foam (In Shower or Over the Sink)

**NOTE: FOR MODEL PR1387 ONLY.**

*We recommend that you use the shaver in the shower for optimal performance.*

**NOTE: In order to ensure optimal performance, thoroughly rinse the shaver head under water during and after shaving.**

1. Apply water to face and neck area.
2. Apply shave gel or foam to applicable shaving area.
3. Rinse shaver head under water.
4. Shave face and neck using short, circular strokes.
5. Throughout the shave, regularly rinse shaver head under water to avoid residue build up.
6. When finished shaving, rinse face.
7. Thoroughly rinse shaver head of all gel or foam.
8. Follow cleaning and care instructions located on page 8.

## Cleaning and Care

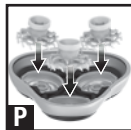
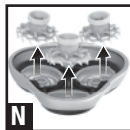


**For washable models ONLY. The head assembly part may be cleaned under warm water.**

**NOTE: \*\*When cleaning your shaver, make sure the shaver is turned off and disconnected from the power cord.\*\***

### CAUTION!

- To clean the external surfaces of the shaver, use a damp cloth. Do not use strong detergents or other chemicals.
- To dry, wipe the surface of the shaver with a dry towel. Do not use a hair dryer or heater to dry the shaver.



### Daily:

1. Press the release button on front of shaver and open head assembly. (Diagram I)
2. Tap out excess hair shavings. (Diagram J)
3. Rinse the head of the shaver in running water. **NEVER** submerge the shaver in water!
4. Leave head open for drying.
5. Snap head closed before using the shaver again. (Diagram K)



## Weekly:

1. Perform the daily cleaning steps 1 and 2.
  2. Remove the cover from the hair pocket assembly. (Diagram L) Place the body of the shaver aside to ensure that it will not get wet.
  3. Slide the blue inner cutter carrier down to release it from the assembly. (Diagram M)
  4. Remove the inner cutter carrier away from the cutters.
  5. Remove the cutters. (Diagram N)
  6. Thoroughly rinse away any debris from inner and outer cutters. (Diagram O)
  7. Replace the inner cutters. Match the hub colors of the inner and outer cutters (Diagram P)
  8. Place the inner cutter carrier back into position and lock into place. (Diagram Q)
  9. Lubricate each cutter with household oil.
  10. Align the spring hinge into the slot at the back of the hair pocket and press into place. Snap the head assembly closed. (Diagram K)
- \*\* Trimmer:** Lubricate teeth with oil every six months

## Product Disposal

When your rechargeable shaver reaches the end of its useful life, the Lithium batteries must be removed from the shaver and be recycled or disposed of properly in accordance with your state and local requirements. If this is not required by law, you may elect to dispose of the shaver with the batteries.

### To Remove the Rechargeable Battery:

1. Unplug the shaver.
2. Run shaver until motor stops.
3. Remove head from shaver (Press release button and pull head straight away from shaver body)
4. Using a small screwdriver pry front cover from shaver body.
5. Remove four screws located on front of shaver.
6. Remove rear cover from inner housing to expose batteries.
7. Pry batteries free from circuit board and cut wires.
8. Dispose of batteries.

This device uses one of the following types of rechargeable batteries: nickel metal hydride (NiMH), nickel cadmium (Ni-Cd) or Lithium Ion (Li-Ion) (see included battery for indication of type).

**CAUTION: ALL RECHARGEABLE BATTERIES MUST BE RECYCLED OR DISPOSED OF IN ACCORDANCE WITH APPLICABLE STATE AND LOCAL REGULATIONS. DO NOT PUT IN FIRE OR MUTILATE, AS THE BATTERY MAY BURST OR RELEASE TOXIC MATERIALS. DO NOT SHORT-CIRCUIT, AS THIS MAY CAUSE BURNS.**

Spectrum Brands, Inc. is a proud participant in the EPA-approved Rechargeable Battery Recycling Call2Recycle™, which collects and recycles these batteries at the end of their useful life when taken out of services in the United States or Canada. The RBRC® program provides a convenient alternative to placing used

LiFePO<sub>4</sub> batteries into the trash or the municipal waste stream, which may be illegal in your area. Please call 1-800-8-BATTERY™ or visit [www.call2recycle.org](http://www.call2recycle.org) for information on LiFePO<sub>4</sub> battery recycling and disposal bans/restriction in your area. Spectrum Brands, Inc.'s involvement in this program is part of our commitment to preserving our environment and conserving our natural resources.

## How To Order Shaver Accessories

***Maintain your shaver's peak performance!***

***Keep Your Shaver Performing Like New!***

- Because your satisfaction is important to us, we make it simple for you to keep your new shaver performing at its peak.
- For the best possible shave, it is necessary to replace the heads and cutters on your shaver every 12 months.
- Remington makes this easy!

**Your shaver uses replacement part SPR-PR13.**

**Two Easy Ways to Order!**

1. Call! U.S. Residents call 1-800-392-6544
2. Order Online at **[RemingtonProducts.com](http://RemingtonProducts.com)**



It is very important to replace your head and cutters when necessary to ensure a close, comfortable shave without irritation. We recommend they be replaced every 12 months. Here are some signs of head and cutter wear, indicating that replacement is needed:

- **Irritation:** As the heads get excessively worn you may experience some skin irritation. This would be especially noticeable when you apply moisturizing lotion.
- **Pulling:** When the cutters wear you may feel a sense of pulling and a loss of closeness when you shave. This is an indication that it is time to replace your heads and cutters.

## Warranty

### Limited Two-Year Warranty

Spectrum Brands, Inc. warrants this product against any defects that are due to faulty material or workmanship for a two-year period from the original date of consumer purchase. This warranty does not include damage to the product resulting from accident or misuse. If the product should become defective within the warranty period, we will replace it free of charge. Return your product and sales receipt with your name, address and day time phone number to: Remington Returns Center, 507 Stokely Dr., P.O. Box 1, Deforest, WI 53532. For more information call 800-736-4648 in the US.

Warranty excludes:

- Heads and cutters

### KEEP ORIGINAL SALES RECEIPT AS PROOF OF PURCHASE FOR WARRANTY PURPOSES.

This warranty does not cover products damaged by the following:

- Accident, misuse, abuse or alteration of the product
- Servicing by unauthorized persons
- Use with unauthorized accessories
- Connecting it to incorrect current and voltage
- Wrapping cord around appliance causing premature wear and breakage
- Any other conditions beyond our control

**SPECTRUM BRANDS, INC. SHALL NOT BE RESPONSIBLE FOR ANY INCIDENTAL, SPECIAL OR CONSEQUENTIAL DAMAGES RESULTING FROM THE USE OF THIS PRODUCT. ALL IMPLIED WARRANTIES, INCLUDING BUT NOT LIMITED TO IMPLIED WARRANTIES OF FITNESS AND MERCHANTABILITY, ARE LIMITED IN DURATION TO TWO YEARS FROM DATE OF ORIGINAL PURCHASE.**

This warranty gives you specific legal rights and you may also have other rights which vary from state to state or province to province. Some states do not allow the exclusion or limitation of incidental, special or consequential damages.

## Performance Guarantee

### Spectrum Brands, Inc. Money-back Offer

If within 30 days after you have purchased your Remington® branded product, you are not satisfied and would like a refund, return it with the sales slip indicating purchase price and date of purchase to the retailer from whom it was purchased. Spectrum Brands, Inc. will reimburse all retailers who accept the product within 30 days from the date of purchase. If you have any questions concerning the money-back guarantee, please call 800-736-4648 in the US.

## Remington Guarantees Satisfaction After 30 Days!

### Remington Men's Shave and Groom 60-Day Money Back Guarantee\*

If within 60 days after purchasing any Remington® brand Men's Shave and Groom product, you are not completely satisfied and would like a refund, return it with the original dated sales receipt directly to Remington and receive a full refund.\*\* For questions concerning the money-back guarantee, please call 800-736-4648 in the US.

\*Applies to US customers' returns only.

\*\*Terms and conditions apply.

### Terms and Conditions

1. Refund will be in the form of a check issued in US Dollars and will be provided only if all Terms and Conditions are met.
2. The following items must be returned to Remington and postmarked no later than 60 days after purchase of the Remington® brand Men's Shave and Groom product:
  - a. The Remington® product;
  - b. The original sales receipt indicating price and date purchased; and
  - c. The completed 60-day money back guarantee form located at **RemingtonProducts.com/60day.**
3. In addition, Remington, in its discretion, must determine that the returned product was used in accordance with the instruction booklet (included with the product at the time of purchase).
4. Returns should be mailed prepaid (no collect returns accepted) to:  
Remington 60-Day MBG  
507 Stokely Drive, Box 1  
DeForest, WI 53532
5. Refund does not include postage costs for the return of the product, but will include applicable taxes paid by customer, if any.
6. No responsibility will be accepted for late, lost, stolen, misdirected or damaged product.
7. Please allow 4–6 weeks to receive your refund by check.

**Questions or comments:** Call 800-736-4648 in the US.

Or visit **RemingtonProducts.com**

Dist. by: Spectrum Brands, Inc., Middleton, WI 53562

Remington is a trademark of Spectrum Brands, Inc. All other marks are the property of their respective owners.

© 2016 Spectrum Brands, Inc. 9/16 16469-00

Made in China **T22-0004665-A**

Contains a listed adaptor.