

REMINGTON®

HYPERFLEX

XR1430

Use and Care Guide



Register Your New Product Today!

By registering your new Remington® product, you will receive special offers.
Register online at: RemingtonProducts.com

IMPORTANT SAFETY INSTRUCTIONS

When using an electrical appliance, basic precautions should always be observed, including the following. **Please read all instructions before using this shaver.**

WARNINGS

To reduce the risk of burns, fire, electric shock, or injury to persons:

- When connecting the charging unit to a power source outside of the USA or Canada, use a plug adapter suitable for the power outlet. This device has a charging adapter that will work with worldwide 100V-240V power outlets.
- Only use the power adapter provided with this device.
- Do not reach for the appliance if it has fallen into water while plugged into the power source. Unplug from the power source at the wall immediately.
- Shaver may be rinsed under water or used in the shower, but never use the charging unit in the shower.
- Detach the shaver and charging unit from the power source before cleaning.
- Except when charging, always unplug this appliance immediately after using.
- When recharging place in a safe position, out of the reach of children and pets.
- Close supervision is necessary when this appliance is used by, on, or near children or individuals with certain disabilities or special needs.
- Use this appliance only for its intended use as described in this manual.
- Do not use attachments not recommended or provided by the supplier.
- Never operate this appliance if the electrical cord is frayed or the plug is damaged.
- Keep the electrical cord away from heated surfaces.
- Never drop or insert objects into any of the appliances openings.
- This appliance is intended for household use only.
- Do not use outdoors, or operate where aerosol (spray) products are being used, or where oxygen is being administered.

- Always attach the plug to the appliance, then to the wall outlet. To disconnect, turn all controls to OFF, then remove plug from outlet.
- Always pull on the plug body to unplug the appliance from the wall socket. Never pull on the electrical cord.
- Do not plug in or unplug this appliance when your hands are wet.
- Do not use extension cords or a voltage converter with this appliance.
- Do not wrap the power cord around the appliance.
- Always store the appliance and charger in low moisture area.
- Do not expose the appliance to temperatures over 140° F (60° C).
- Detach removable power cords from the appliance during storage.
- Do not use this shaver if the cutting head surfaces are damaged or broken as facial injury could occur.
- This shaver and trimmer are intended for use on facial hair only. It should not be used for longer hair on your head or body.

SAVE THESE INSTRUCTIONS

Product Features



SHAVER PARTS

- | | |
|------------------------------|----------------------------------|
| 1. HyperFlex Cutting Head | 5. Pop-Up Detail Trimmer |
| 2. Full Floating Heads | 6. Charging Pins |
| 3. Power On/Off Button | 7. Charging Stand |
| 4. Battery Indicator Display | 8. Stubble Attachment/Head Guard |
| | 9. Charging Adapter (Not Shown) |

Performance Features

HyperFlex Cutting Head

- Cutting head pivots and flexes to comfortably follow the contour of your face.

Full Floating Heads

- Each head independently flexes to react to facial contours.

Dual Track Cutters

- Three rotary cutters with two cutting tracks for fast efficient shaves.

Lithium Battery

- Durable, long lasting power supply; 3X longer life than standard rechargeable cells.

60 Minute Run Time

- Weeks of daily shaving on a single charge.

4 Hour Charge Time

- Fast delivery of a full battery charge.

Waterproof

- Use dry or with shaving gel. Safe to use shaver in the shower for added comfort.
- Fast, simple cleaning under the faucet.

Worldwide Voltage

- Provided charging adapter works with 100V to 240V power source.

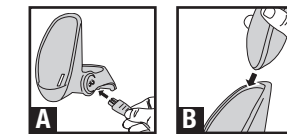
Folding Charge Stand

- Rotate open to hold shaver while charging. Collapses down around shaver for travel or storage.



Use with gel or foam in the shower for ultimate comfort.

Charging



Charging Process

1. Plug the power cord adapter into the charging stand.

Unfold the charging stand into the open position. Plug the cord into the port at the side of the charging stand. The plug has a custom shape to match the charge stand and prevent use with incorrect adapters. (A)

2. Plug the adapter into the wall outlet.

Place the stand on a flat surface and where it cannot be accidentally bumped into standing water such as a sink or bathtub.

3. Place the shaver into the charge stand.

Position the shaver body so the charging pins of the shaver mate with the charging strips in the charge stand. (B) Note the LED battery display will indicate that the battery is actively charging as noted in the LED indicator section of this manual.

4. Use the shaver until a recharge is required.

Do not leave the charger plugged in so that you are recharging the shaver after every use. This will shorten the life of the battery. To use the charge stand to hold the shaver on your counter between uses, simply unplug the adapter cord from the charge stand and store it away until a recharge is needed.

LED Battery Indicators

LED lights display the battery charge level

- Low Charge: Top LED light will glow solid red to indicate the shaver needs to be recharged. There is less than 5 minutes of run time remaining.
- Charging: Bottom LED light will glow solid green when shaver is placed in charger to indicate the battery is taking a charge.
- Full Charge: When fully charged the green LED light will go off.

Shaving Technique

Your HyperFlex shaver may be used either dry or wet with shaving cream or gel. We recommend that you use the shaver in the shower for optimal performance.

Wet Shaving

- Wet shaving will provide a very comfortable and close shave. The shaver is safe to use in the shower or can be rinsed under running water at the sink.
- Wet your face and neck area with water.
- Apply shave gel or foam to your face.
- Press the power button to turn the shaver on. Rinse the cutting head under running water.
- Place the shaver cutting head against your skin with all three cutters touching your skin.
- Pressing lightly against your skin, move the shaver head in slow, small circular motions.
- Hairs on your face and neck may grow in different directions. Moving your shaver against the direction of hair growth will be most effective.
- You may use your free hand to gently stretch your skin tight which can aid in making hairs stand up to more easily enter the cutting slots.
- To trim sideburns or edges of goatees or beards, press the pop-up trimmer release button to activate the trimmer. Place the trimmer blade parallel with your skin and use downward strokes to cut.
- When finished, rinse your face and check for any hairs that may have been missed for quick touch up.
- When using your shaver with foams or gels it is important to rinse the cutting head clean after each use. This will avoid having the gels dry in the cutting head and clogging the shaver. Refer to the cleaning instructions to keep your shaver cutting at peak performance.

Dry Shaving

- Dry shaving is a fast and low mess way to shave.
- Press the power button to turn the shaver on.
- Place the shaver cutting head against your skin with all three cutters touching your skin.
- Pressing lightly against your skin, move the shaver head in slow, small circular motions.
- Hairs on your face and neck may grow in different directions. Moving your shaver against the direction of hair growth will be most effective.
- You may use your free hand to gently stretch your skin tight which can aid in making hairs stand up to more easily enter the cutting slots.
- To trim sideburns or edges of goatees or beards, press the pop-up trimmer release button to activate the trimmer. Place the trimmer blade parallel with your skin and use downward strokes to cut.
- Refer to the cleaning instructions to keep your shaver cutting at peak performance.

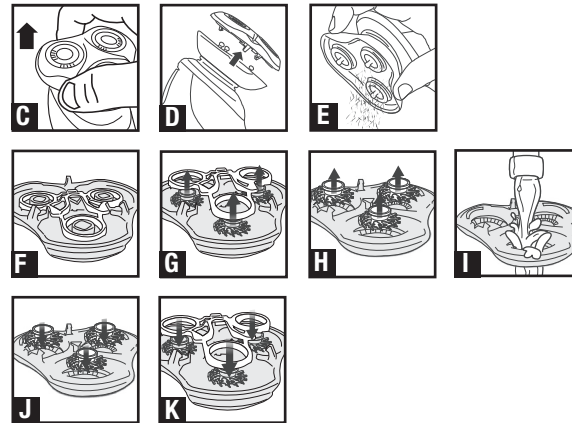
Stubble

To achieve a stubble look instead of a clean shave, affix the Stubble attachment/ Head guard over the cutter assembly and shave as usual. It will trim the hairs to 1.5mm. That's about a 3-day hair growth. If the hairs aren't longer than that at the time of trimming, nothing will get trimmed.

Cleaning and Care

Note: when cleaning your shaver, make sure the shaver is turned off and disconnected from the power cord.

- Your HyperFlex shaver is built to be watertight. This makes clean up fast and easy as it is safe to rinse the shaver body and head under running water.
- Do not use strong detergents or chemicals to clean your shaver. Water alone or with mild anti-bacterial soap is recommended.
- Do not place your shaver in the dishwasher.



Daily Cleaning

1. Pull the rotary cutter face off of the cutting head, (C) and (D). This will expose the hair pocket where shaven hair particles are collected.
2. Tap out excess shavings in the sink or waste basket. (E)
3. Rinse both the cutter face and hair pocket under warm running water to rinse clean.
4. Snap the cutter face back onto the shaver.

Weekly Cleaning

1. A more thorough cleaning of the cutters on a weekly basis will add to the life and performance of your shaver.

2. Pull the rotary cutter face off of the cutting head, (C) and (D). This will expose the hair pocket where shaven hair particles are collected.
3. Tap out excess shavings in the sink or wastebasket. (E)
4. Release the blue inner cutter support by sliding it out of the snap lock. (G) Note the small triangle at the center of the blue support. With your fingertip, slide the blue support back to release the snap.
5. Remove the inner cutters from the individual cutting heads. (H) Note that the hubs of the cutters are color coded to match the color of the outer cutters. The cutters should be mated with their matching color for best performance and life.
6. Thoroughly rinse away any small debris from both the inner and outer cutters and hair pocket.(I)
7. Replace the inner cutters. Remember to match the color coded hubs. (J)
8. Replace the blue inner cutter support. Be sure it securely snaps back in under the small triangle at the center of the cutting head. (K)
9. The cutter assemblies may be lubricated with a single drop of household oil.
10. Snap the cutter face back onto the cutting head base.

Product Disposal

When your rechargeable shaver reaches the end of its useful life, the LiFePO₄ batteries must be removed from the shaver and be recycled or disposed of properly in accordance with your state and local requirements. If this is not required by law, you may elect to dispose of the shaver with the batteries.

CAUTION! Do not put in fire or mutilate your batteries when disposing as they may burst and release toxic materials. Do not short circuit as it may cause burns. Dispose of properly in accordance with your local and state requirements.

To Remove the Rechargeable Battery:

1. Unplug the shaver
2. Run shaver until the motor stops
3. Remove the head from the shaver (Pull head up and off)
4. Using a small screwdriver, pry the 'collar' off of the top of the handle
5. Using a small screwdriver, pry the front cover from the body
6. Remove three screws located on front of shaver
7. Using a small screw driver, pry up the newly unsecured inner housing to expose the battery
8. Pry battery free from circuit board
9. Dispose of battery properly

Shaver Replacement Parts

To keep your HyperFlex shaver working at peak performance, it is recommended that you replace the cutting head after every 12-18 months of use. Indication that your shaver may need to have the cutting head replaced would be if you notice an increase in irritation of your skin after you shave or you feel hair pulling due to dull cutting blades.

The replacement cutting head for your shaver is model number SPR-XR14

Shaver Accessories

Remington also offers these additional attachments that fit your HyperFlex shaver. These attachments easily snap on and off interchangeably with your shaving head.



Groomer attachment with adjustable length settings: SPR-XT

- If you like to wear a beard, goatee, or stubble look, the groomer head will trim your facial hair to adjustable lengths between .5 mm and 5 mm.

Facial Brush attachment: SPR-XFB

- The facial brush attachment is used for deep cleaning and exfoliating for healthy facial skin. Two brush types are available.

SPR-XFM Massage Brush
SPR-XFN Cleansing Brush

How to Order Parts and Accessories

Two easy ways to order spare parts and accessories are available.

- Order by Phone:
U.S. Residents: 1-800-392-6544
- Order Online:
U.S. Residents: RemingtonProducts.com

Warranty

Limited Five-Year Warranty

Spectrum Brands, Inc. warrants this product against any defects that are due to faulty material or workmanship for a five-year period from the original date of consumer purchase. This warranty does not include damage to the product resulting from accident or misuse.

If the product should become defective within the warranty period, we will replace it free of charge. Return your product and sales receipt with your name, address and day time phone number to: Remington Returns Center, 507 Stokely Dr., P.O. Box 1, Deforest, WI 53532. For more information call 800-736-4648 in the U.S. or Canada.

Warranty excludes:

- Heads and cutters

KEEP ORIGINAL SALES RECEIPT AS PROOF OF PURCHASE FOR WARRANTY PURPOSES.

This warranty does not cover products damaged by the following:

- Accident, misuse, abuse or alteration of the product
- Servicing by unauthorized persons
- Use with unauthorized accessories
- Connecting it to incorrect current and voltage
- Any other conditions beyond our control

No responsibility, obligations, or liability is assumed for the installation or maintenance of this product.

SPECTRUM BRANDS, INC. SHALL NOT BE RESPONSIBLE FOR ANY INCIDENTAL, SPECIAL OR CONSEQUENTIAL DAMAGES RESULTING FROM THE USE OF THIS PRODUCT. ALL IMPLIED WARRANTIES, INCLUDING BUT NOT LIMITED TO IMPLIED WARRANTIES OF FITNESS AND MERCHANTABILITY, ARE LIMITED IN DURATION TO FIVE YEARS FROM DATE OF ORIGINAL PURCHASE.

This warranty gives you specific legal rights and you may also have other rights which vary from state to state or province to province. Some states do not allow the exclusion or limitation of incidental, special or consequential damages.

This warranty shall not be valid where it is contrary to U.S. and other applicable laws, or where the warranty would be prohibited under any economic sanctions, export control laws, embargos, or other restrictive trade measures enforced by the United States or other applicable jurisdictions. This includes, without limitation, any warranty claims implicating parties from, or otherwise located in, Cuba, Iran, North Korea, Syria and the disputed Crimea region.

Spectrum Brands, Inc. Money-back Offer

If within 30 days after you have purchased your Remington® branded product from an authorized source, you are not satisfied and would like a refund, return it with the sales receipt indicating purchase price and date of purchase to the retailer from whom it was purchased. Spectrum Brands, Inc. will reimburse all retailers who accept the product within 30 days from the date of purchase. If you have any questions concerning the money-back guarantee, please call 800-736-4648 in the U.S. or Canada.

Remington Guarantees Satisfaction After 30 Days!

Remington 60-Day Money Back Guarantee*

If within 60 days after purchasing any Remington® product, you are not completely satisfied and would like a refund, return it with the original dated sales receipt directly to Remington and receive a full refund.** For questions concerning the money-back guarantee, please call 800-736-4648 in the U.S. or Canada.

*Applies to U.S. and Canadian customers' returns only.

**Terms and conditions apply.

1. Refund will be in the form of a check issued in U.S. Dollars and will be provided only if all Terms and Conditions are met.
2. The following items must be returned to Remington and postmarked no later than 60 days after purchase of the Remington® product:
 - a. The Remington® product;
 - b. The original sales receipt indicating price and date purchased; and
 - c. The completed 60-day money back guarantee form located at **RemingtonProducts.com/60day.**
3. In addition, Remington, in its discretion, must determine that the returned product was used in accordance with the instruction booklet (included with the product at the time of purchase).
4. Returns should be mailed prepaid (no collect returns accepted) to:
Remington 60-Day MBG
507 Stokely Drive, Box 1
DeForest, WI 53532
5. Refund does not include postage costs for the return of the product, but will include applicable taxes paid by customer, if any.
6. No responsibility will be accepted for late, lost, stolen, misdirected or damaged product.
7. Please allow 4–6 weeks to receive your refund by check.

100-240V ~ 50/60Hz TYPE: XR1430

Questions or comments: Call 800-736-4648 in the U.S. or visit **RemingtonProducts.com.**

Dist. by: Spectrum Brands, Inc., Middleton, WI 53562

®/TM are owned by Spectrum Brands, Inc.

© 2021 Spectrum Brands, Inc. All rights reserved. 4/21 28576

Made in China.
T22-7002104-A

Contains a Listed Adaptor