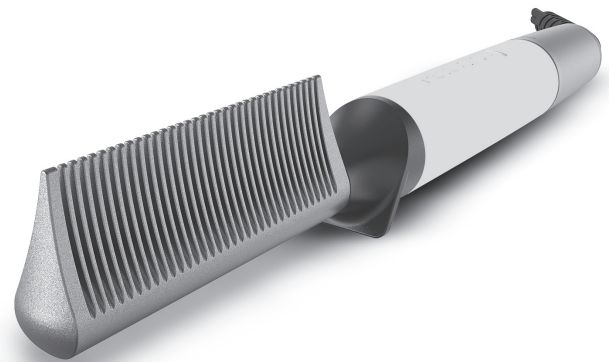


REMINGTON®

CI11AP Series

Use and Care Guide



Register Your New Product Today!

By registering your new Remington® product, you will receive special offers.
Register online at: RemingtonProducts.com

IMPORTANT SAFETY INSTRUCTIONS

When using electrical appliances, especially when children are present, basic safety precautions should always be followed, including the following:

READ ALL INSTRUCTIONS BEFORE USING. KEEP AWAY FROM WATER.

DANGER

As with most electrical appliances, electrical parts are electrically live even when switch is off. To reduce the risk of death by electric shock:

- Always unplug this appliance from the electrical outlet immediately after using.
- Do not use while bathing or in the shower.
- Do not place or store this appliance where it can fall or be pulled into a tub or sink.
- Do not place in or drop into water or other liquid.
- Do not reach for an appliance that has fallen into water. Unplug it immediately.
- Unplug this appliance before cleaning it.

WARNING

To reduce the risk of burns, fire, electric shock or injury to persons:

- An appliance should never be left unattended when it is plugged in.
- Close supervision is necessary when this appliance is used by, on, or near children or individuals with certain disabilities or special needs.
- Use this appliance only for its intended use as described in this manual. Do not use attachments not recommended by the manufacturer.
- Never operate this appliance if it has a damaged cord or plug, if it is not working properly, if it has been dropped or damaged, or if it has been dropped into water.
- Keep the cord away from the heated surfaces. **Do not wrap the cord around the appliance.**
- Never use while sleeping.

- Never block the air openings of the appliance or place it on a soft surface, such as a bed or couch, where the air openings may be blocked. Keep the air openings free of lint, hair and the like.
- Never drop or insert any object into any of the appliance's openings.
- Do not use outdoors or operate where aerosol (spray) products are being used, or where oxygen is being administered.
- Do not use an extension cord.
- This appliance is hot when in use. Do not let eyes or bare skin touch heated surfaces.
- Do not place the heated unit directly on any surface while it is hot or plugged in. Use the stand provided.
- The plug on this appliance has one blade wider than the other, it is a polarized plug. As a safety feature, this plug will fit in a polarized outlet only one way. If the plug does not fit fully in the outlet, reverse the plug. If it still does not fit contact a qualified electrician. Do not attempt to defeat this safety feature.
- Always store this appliance and cord in a moisture-free area. Do not store it in temperatures exceeding 140°F (60°C).
- This appliance is for household use only.
- Do not plug or unplug this appliance when your hands are wet.



**KEEP AWAY FROM CHILDREN
SAVE THESE INSTRUCTIONS**

Product Features

Thank you for purchasing the Remington® Hot Comb. Please carefully read the instructions contained in the booklet, and keep them in a safe place for future reference.

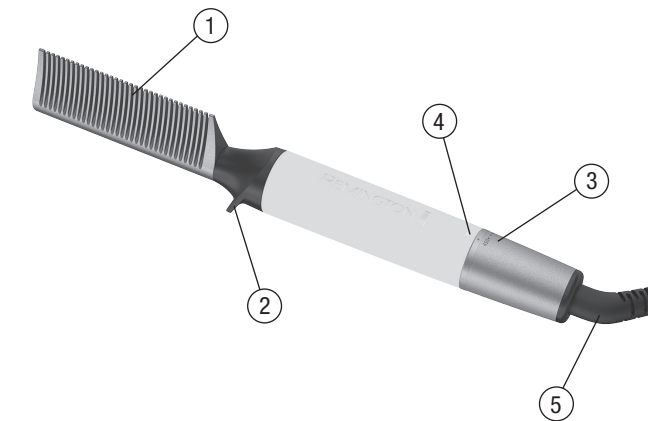
Beautiful silky-smooth hair with gentle tools that help preserve your hair's moisture.

Key Features:

- No harsh edges for over 30% less stress on hair*
- Advanced Ceramic coating helps lock in hair's moisture
- 450°F Ultra-high Heat - 8 total temperature settings (210°F – 450°F) for all hair types
- 60% smoother** for a softer glide
- Quick Heat Up - 60 second quick heat up with LED indication
- Enhanced design with easy grip matte finish, integrated heat stand, and convenient temperature dial control
- Auto Safety Shut-Off - Automatically turns off after 1 hour
- Tangle free swivel cord

* vs. leading U.S. competitors

** vs. the same Remington® hot comb with a standard Remington® coating



Straightener Features

1. Pressing Comb
2. Resting Stand
3. On/Off and Temperature Dial
4. LED temperature indicator
5. Swivel cord

How to Use

Heat Settings

Take extra care when using a professional styler. To prevent hair damage, make sure to use the correct temperature setting for your hair type.

- Select the appropriate temperature for your hair type from the table below.

Recommended Temperatures

Temperature	Hair type
210°F – 250°F	Thin/fine, or easy-to-style
285°F – 320°F	Color-treated
355°F – 390°F	Textured
420°F – 450°F	Thick and harder-to-style hair

On/Off Temperature Dial Features

- Twist the temperature dial to turn unit on and select the desired temperature.
- During heat up time, the LED temperature display will pulse until the desired temperature is reached.
- When the appliance reaches the desired temperature, the pulsing will stop, the correlating lights will be displayed.

Automatic Safety Shutoff

After approximately one hour, the unit will automatically shut itself off. To reactivate the unit, rotate the dial back to '0'(OFF) and then reselect your chosen temperature. The LED will illuminate again and the tool will heat up.

Usage Tips

Straightening Your Hair

1. Hair should be dry and free of tangles before using the hot comb.
2. Plug the styler into an electrical outlet and twist the temperature dial to turn the comb on. The red LED light will start pulsing as the comb heats up.
3. Select the desired temperature setting by twisting the dial. The lights will flash while the unit heats up, and then glow steadily when it has reached the selected temperature.
4. Divide hair into 2 inch sections and clip the upper layers on top of your head, out of the way. Work with underneath layers first.
5. Test the styler on a small section of hair, then adjust the temperature up or down before styling the rest of your hair.

NOTE:

- If you find that you need a higher setting while straightening your hair, simply adjust the temperature to a higher heat setting.
 - While straightening your hair, if you find that you need a lower setting, adjust the temperature to a lower heat setting. Because the unit is already hot, it may take a few minutes to cool off.
6. Once comb is pre-heated after 60 seconds, take a small section of hair, pull down and away from your scalp, and hold it taut.
 7. Starting at the roots, insert comb into the hair section closest to the scalp. The back of the comb straightens the hair, so hold the section of hair firmly against the back of the comb.
- CAUTION:** Do not let the pressing comb touch your bare skin or scalp. Burns may result. Do not use comb with aerosol or other flammable hair products.
8. Slowly turn the comb away from you and move it through the entire hair strand until the hair ends pass through the teeth of the comb.
 9. To create waves, curls, or flicks, rotate your wrist to turn the comb towards or away from your face as you run the comb down the length of your hair.
 10. Repeat with all the sections of your hair, working with the underneath layers first, then the top and sides to finish.
 11. When you are finished styling, twist the dial to the 0 to turn the unit off. The LED light will stop pulsing. Unplug the unit and allow it to cool before storing.

Maintenance

Cleaning

Make sure the unit is unplugged and cool. Use a damp cloth to clean the comb and the outside of the power handle. No other maintenance of the unit is required. This appliance has no user serviceable parts.

Storage

Unplug the unit whenever it is not in use. Allow it to cool, then store it out of reach of children in a safe, dry location.

Never wrap the cord around the appliance. This will cause the cord to wear prematurely and break, thus voiding the warranty. Handle the cord carefully and avoid jerking, twisting, or straining it, especially at plug connections. If the supply cord is damaged, it must be replaced by the manufacturer, its service agent, or similarly qualified persons in order to avoid a hazard.

Warranty

Limited Five-Year Warranty

Empower Brands, LLC warrants this product to the original purchaser against any defects that are due to faulty material or workmanship for a five-year period from the original date of consumer purchase. This warranty does not include damage to the product resulting from accident or misuse.

If the product should become defective within the warranty period, we will replace it free of charge. Return your product and sales receipt with your name, address and day time phone number to: Remington Returns Center, 507 Stokely Dr., P.O. Box 1, Deforest, WI 53532. For more information call 800-736-4648 in the U.S.

KEEP ORIGINAL SALES RECEIPT AS PROOF OF PURCHASE FOR WARRANTY PURPOSES.

This warranty does not cover products damaged by the following:

- Accident, misuse, abuse or alteration of the product
- Servicing by unauthorized persons
- Use with unauthorized accessories
- Connecting it to incorrect current and voltage
- Any other conditions beyond our control

No responsibility, obligations, or liability is assumed for the installation or maintenance of this product.

EMPOWER BRANDS, LLC SHALL NOT BE RESPONSIBLE FOR ANY INCIDENTAL, SPECIAL OR CONSEQUENTIAL DAMAGES RESULTING FROM THE USE OF THIS PRODUCT. ALL IMPLIED WARRANTIES, INCLUDING BUT NOT LIMITED TO IMPLIED WARRANTIES OF FITNESS AND MERCHANTABILITY, ARE LIMITED IN DURATION TO FIVE YEARS FROM DATE OF ORIGINAL PURCHASE.

This warranty gives you specific legal rights and you may also have other rights which vary from state to state. Some states do not allow the exclusion or limitation of incidental, special or consequential damages.

This warranty shall not be valid where it is contrary to U.S. and other applicable laws, or where the warranty would be prohibited under any economic sanctions, export control laws, embargos, or other restrictive trade measures enforced by the United States or other applicable jurisdictions. This includes, without limitation, any warranty claims implicating parties from, or otherwise located in, Cuba, Iran, North Korea, Syria and the disputed Crimea region.

Empower Brands, LLC Money-back Offer

If within 30 days after you have purchased your Remington® branded product from an authorized source, you are not satisfied and would like a refund, return it with the sales receipt indicating purchase price and date of purchase to the retailer from whom it was purchased. Empower Brands, LLC will reimburse all retailers who accept the product within 30 days from the date of purchase. If you have any questions concerning the money-back guarantee, please call 800-736-4648 in the U.S.

Remington Guarantees Satisfaction After 30 Days!

Remington 60-Day Money Back Guarantee*

If within 60 days after purchasing any Remington® product, you are not completely satisfied and would like a refund, return it with the original dated sales receipt directly to Remington and receive a full refund.** For questions concerning the money-back guarantee, please call 800-736-4648 in the U.S.

*Applies to U.S. customers' returns only.

**Terms and conditions apply.

1. Refund will be in the form of a check issued in U.S. Dollars and will be provided only if all Terms and Conditions are met.
2. The following items must be returned to Remington and postmarked no later than 60 days after purchase of the Remington® product:
 - a. The Remington® product;
 - b. The original sales receipt indicating price and date purchased; and
 - c. The completed 60-day money back guarantee form located at **RemingtonProducts.com/60day**.

3. In addition, Remington, in its discretion, must determine that the returned product was used in accordance with the instruction booklet (included with the product at the time of purchase).
4. Returns should be mailed prepaid (no collect returns accepted) to:
Remington 60-Day MBG
507 Stokely Drive, Box 1
DeForest, WI 53532
5. Refund does not include postage costs for the return of the product, but will include applicable taxes paid by customer, if any.
6. No responsibility will be accepted for late, lost, stolen, misdirected or damaged product.
7. Please allow 4–6 weeks to receive your refund by check.

Please do not throw this product away with normal household waste. If possible, take it to an official collection point in your area that recycles this type of product. Thank you for considering the environment.



This device complies with part 15 of the FCC Rules. Operation is subject to the following two conditions: (1) This device may not cause harmful interference, and (2) this device must accept any interference received, including interference that may cause undesired operation.
CAN ICES-003 (B)/NMB-003 (B).

120 VAC 60 Hz TYPE: C111AP

Questions or comments: Call 800-736-4648 in the U.S. or visit **RemingtonProducts.com**.

Dist. by Empower Brands, LLC, Middleton, WI 53562
© Registered Trademark and ™ Trademark of Empower Brands, LLC
© 2022 Empower Brands, LLC. All rights reserved. 9/22 29413

Made in China. T22-7002877-B

