

REMINGTON®

Use and Care Guide D30A Series



Register Your New Product Today!

By registering your new Remington® product, you will receive special offers.
Register online at: RemingtonProducts.com

IMPORTANT SAFETY INSTRUCTIONS

When using electrical appliances, especially when children are present, basic safety precautions should always be followed, including the following:

**READ ALL INSTRUCTIONS BEFORE USING.
KEEP AWAY FROM WATER.**

DANGER

As with most electrical appliances, electrical parts are electrically live even when the switch is off. To reduce the risk of electric shock:

- Do not reach for an appliance that has fallen into water. Unplug it immediately.
- Do not use while bathing or in the shower.
- Do not place or drop into water or other liquid.
- Do not place or store this appliance where it can fall or be pulled into a tub or sink.
- If an appliance falls into water, **unplug it** immediately. Do not reach into the water.
- Always unplug this appliance from the electrical outlet immediately after using.
- Unplug this appliance before cleaning it.

WARNING

To reduce the risk of burns, fire, electric shock or injury to persons:

- This appliance is for household use only.
- An appliance should never be left unattended when it's plugged in.
- Close supervision is necessary when this appliance is used by, on, or near children or persons with special needs.
- Use this appliance only for its intended use as described in this manual. Do not use attachments not recommended by manufacturer.
- Keep the cord away from heated surfaces. **Do not wrap the cord around the appliance.**

- Never operate this appliance if it has a damaged cord or plug, if it is not working properly, if it has been dropped or damaged, or if it has been dropped into water.
- Never drop or insert any object into any of the appliance's openings.
- Do not use outdoors or operate where aerosol (spray) products are being used, or where oxygen is being administered.
- Always store this appliance and cord in a moisture-free area.
- Do not plug or unplug this appliance when your hands are wet.
- Do not use in countries with 220/240 volt electrical systems; use only with 110/120 volt electrical systems.
- While using the appliance, keep your hair away from the air inlets.
- Do not use an extension cord or a voltage converter with this appliance.
- Never use while sleeping.
- Do not place appliance on any surface while it is operating.
- Do not direct hot air toward eyes or other heat-sensitive areas.
- Attachments may be hot during use. Allow them to cool before handling.
- Never block the air openings of the appliance or place it on a soft surface, such as a bed or couch, where the air openings may be blocked. Keep the air openings free of lint, hair, etc.
- Do not use this dryer to dry a wig (or brush) made of something that may burn easily.
- Do not use this dryer to dry a wig (or brush) that has been cleaned in something that may burn if it still has some of the cleaner on or in it.

KEEP AWAY FROM CHILDREN

SAVE THESE INSTRUCTIONS

Safety Instructions

ALCI Safety Device

This hair dryer is provided with an appliance leakage circuit interrupter (ALCI) safety device built into the plug. This device is designed to make the unit inoperable under some abnormal conditions, such as accidental immersion in water. The ALCI safety device is equipped with a test button so that its operation can be checked.

This unit should be tested before each use to confirm that the safety device is operational.

To test:

After plugging in your hair dryer:

1. Press the reset button on the ALCI device.
2. Press the test button. The reset button will pop out. This verifies that the safety device is operating properly.
3. Press the reset button to reactivate your ALCI safety device.
4. Your hair dryer is now ready for use.

Note: This unit may automatically trip when unplugged. If so, the unit must be reset after it is plugged in. If the dryer doesn't reset after following the above test-ing procedure, call 800-736-4648.

1. Should the ALCI safety device trip (i.e., reset button pops out) during use, press the reset button. Should the hair dryer fail to reset, call 800-736-4648. Never operate this appliance if it has been dropped in water.
2. The dryer is designed to work on ordinary household current only, 125 volts A.C., 60 Hz. It is not intended for commercial use.
3. This appliance is equipped with an automatic thermal limiter, which will cycle off when overheated and come back on when cooled down. If the unit cycles off, unplug the cord for several minutes before restarting.
4. This appliance has a polarized plug (one blade is wider than the other). As a safety feature, this plug will fit in a polarized outlet only one way. If the plug does not fit fully in the outlet, reverse the plug. If it still does not fit, contact a qualified electrician. Do not attempt to defeat this safety feature.



THIS MESSAGE ABOUT

**GROUND
FAULT
CIRCUIT
INTERRUPTERS**

CAN SAVE A LIFE!

If you must use your hair dryer in the bathroom, install a GFCI* now!

Your local electrician can help you decide which type is best for you – a portable unit that plugs into the electrical outlet or a permanent unit installed by your electrician. The National Electrical Code now requires GFCI's in bathrooms, garages, and outdoor outlets of all new homes.

Why do you need a GFCI?

Electricity and water don't mix. If your hair dryer falls in water while it's plugged in, the electric shock can kill you— even if *the switch is "off."*

A regular fuse or circuit breaker won't protect you under these circumstances. A GFCI offers you greater protection.



A GFCI can save your life!

Compared to that, the price is small!

Don't wait... install one now!

*GFCI is a sensitive device that reacts immediately to a small electric current leak by stopping the electricity flow.

Product Features

Thank you for purchasing the Remington® Diffuse, Prep & Smooth Hair Dryer. Please carefully read the instructions contained in this booklet, and keep them in a safe place for future reference.

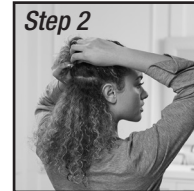
1. Inlet Grill
2. Slide Lock System
3. Ion Generator
4. Grill
5. DC Motor
6. 2 Speed Settings
7. 3 Heat Settings
8. Hang Up Loop
9. Gentle Diffuser
10. Wide-Tooth Comb
11. Smooth Bristle Brush



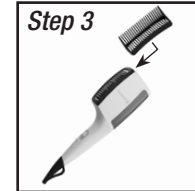
How to Use Your Attachments



Step 1
Towel dry hair and detangle. Apply your favorite styling products as desired.



Step 2
Section hair for easier styling. Start styling the lowest section and work up towards the top layers.



Step 3
Click or slide on the attachment of your choice. Attachment locks securely in place with slide lock system.



WIDE-TOOTH COMB

Stretch, detangle and prep hair for straightening. Place comb at roots then slowly drag comb down the length of your hair to smooth away frizz, straighten, stretch and detangle hair. The slower you pass the dryer through the strands, the straighter the results.



BRISTLE-BRUSH

Smooth and soften hair with bristle-brush. Place brush underneath the roots of hair, then roll hair around brush with one turn of your wrist, then pull downward slowly. Continue process with each section until hair is dry.



DIFFUSER

Define natural curls and add volume with full sized diffuser. Start by drying at roots by gently hovering over the roots and low to medium speed. If desired, place sections of curls into the bowl of diffuser to define. Repeat with each section until roots to tips are dry.

Basic Drying Techniques

1. Gently towel dry hair to remove excess water. Avoid rubbing hair with towel – this creates split ends and frizziness. Detangle hair with a wide-toothed comb or the detangling brush.
2. Be sure dryer is turned off. Plug dryer into an electrical outlet.
3. Turn the dryer on and set it to a high heat and low speed. Remove some of the additional moisture from your hair.
4. When hair is almost dry, lower the heat and set speed to the desired settings and begin to style.
5. Divide hair into manageable sections. Begin at the nape of your neck and brush hair, following the movement of the brush with the dryer. Continue working your way up to your scalp, then to the sides and the front, drying small sections at a time.

Cool Shot Setting

The Cool Shot setting styles by blowing a cool stream of air. Set the dryer to Cool Shot by selecting it with the slide switch.

Hair Care Tips

- Always keep the dryer pointed down the hair shaft to smooth the cuticle and create a silky, shiny style.
- To help prevent heat damage and add shine, spritz damp hair with a heat protection spray before blow drying.
- To create a style with lots of body, apply volumizing mousse or other product to towel dried hair. Distribute it evenly from roots to ends, then blow dry as usual. Hair will be soft, shiny, and full of volume.
- For a quick touch-up between shampoos, mist hair to dampen it, then style with dryer.

Cleaning and Maintenance

Maintenance Instructions

The dryer needs minimum maintenance to ensure the best performance and long life.

- Do not attempt to repair the appliance yourself.
- Keep all intake openings clear of dust accumulation. See “Cleaning Instructions” below. No other maintenance or lubrication is required.
- If the cord becomes twisted due to use, periodically straighten it. Store appliance and cord where they will not be damaged. **Do not wrap cord around dryer.**

Cleaning Instructions

The air filter should be cleaned regularly, since a dirty or clogged filter will impair the efficiency of the dryer.

1. To clean air filter, make sure dryer is turned off and unplugged.
2. Use a soft bristle brush to gently remove any particles that are lodged in the filter.
3. If the unit is dirty, wipe it with a damp cloth.

Storage

When not in use, unplug the unit. Allow it to cool, and store out of reach of children in a safe, dry location. Never wrap the cord around the appliance. This will cause the cord to wear prematurely and break. Handle the cord carefully, and avoid jerking, twisting, or straining it, especially at plug connections.

Warranty

Limited Five-Year Warranty

Empower Brands, LLC warrants this product to the original purchaser against any defects that are due to faulty material or workmanship for a five-year period from the original date of consumer purchase. This warranty does not include damage to the product resulting from accident or misuse.

If the product should become defective within the warranty period, we will replace it free of charge. Return your product and sales receipt with your name, address and day time phone number to: Remington Returns Center, 507 Stokely Dr., P.O. Box 1, Deforest, WI 53532. For more information call 800-736-4648 in the U.S. or Canada.

KEEP ORIGINAL SALES RECEIPT AS PROOF OF PURCHASE FOR WARRANTY PURPOSES.

This warranty does not cover products damaged by the following:

- Accident, misuse, abuse or alteration of the product
- Servicing by unauthorized persons
- Use with unauthorized accessories
- Connecting it to incorrect current and voltage
- Any other conditions beyond our control

No responsibility, obligations, or liability is assumed for the installation or maintenance of this product.

EMPOWER BRANDS, LLC SHALL NOT BE RESPONSIBLE FOR ANY INCIDENTAL, SPECIAL OR CONSEQUENTIAL DAMAGES RESULTING FROM THE USE OF THIS PRODUCT. ALL IMPLIED WARRANTIES, INCLUDING BUT NOT LIMITED TO IMPLIED WARRANTIES OF FITNESS AND MERCHANTABILITY, ARE LIMITED IN DURATION TO FIVE YEARS FROM DATE OF ORIGINAL PURCHASE.

This warranty gives you specific legal rights and you may also have other rights which vary from state to state or province to province. Some states do not allow the exclusion or limitation of incidental, special or consequential damages.

This warranty shall not be valid where it is contrary to U.S. and other applicable laws, or where the warranty would be prohibited under any economic sanctions, export control laws, embargos, or other restrictive trade measures enforced by the United States or other applicable jurisdictions. This includes, without limitation, any warranty claims implicating parties from, or otherwise located in, Cuba, Iran, North Korea, Syria and the disputed Crimea region.

Empower Brands, LLC Money-back Offer

If within 30 days after you have purchased your Remington® branded product from an authorized source, you are not satisfied and would like a refund, return it with the sales receipt indicating purchase price and date of purchase to the retailer from whom it was purchased. Empower Brands, LLC will reimburse all retailers who accept the product within 30 days from the date of purchase. If you have any questions concerning the money-back guarantee, please call 800-736-4648 in the U.S. or Canada.

Remington Guarantees Satisfaction After 30 Days!

Remington 60-Day Money Back Guarantee*

If within 60 days after purchasing any Remington® product, you are not completely satisfied and would like a refund, return it with the original dated sales receipt directly to Remington and receive a full refund.** For questions concerning the money-back guarantee, please call 800-736-4648 in the U.S. or Canada.

*Applies to U.S. and Canadian customers' returns only.

**Terms and conditions apply.

1. Refund will be in the form of a check issued in U.S. Dollars and will be provided only if all Terms and Conditions are met.
2. The following items must be returned to Remington and postmarked no later than 60 days after purchase of the Remington® product:
 - a. The Remington® product;
 - b. The original sales receipt indicating price and date purchased; and
 - c. The completed 60-day money back guarantee form located at RemingtonProducts.com/60day.
3. In addition, Remington, in its discretion, must determine that the returned product was used in accordance with the instruction booklet (included with the product at the time of purchase).
4. Returns should be mailed prepaid (no collect returns accepted) to:

Remington 60-Day MBG
507 Stokely Drive, Box 1
DeForest, WI 53532
5. Refund does not include postage costs for the return of the product, but will include applicable taxes paid by customer, if any.
6. No responsibility will be accepted for late, lost, stolen, misdirected or damaged product.
7. Please allow 4–6 weeks to receive your refund by check.



This device complies with part 15 of the FCC Rules. Operation is subject to the following two conditions: (1) This device may not cause harmful interference, and (2) this device must accept any interference received, including interference that may cause undesired operation.
CAN ICES-003 (B)/NMB-003 (B).

Please do not throw this product away with normal household waste. If possible, take it to an official collection point in your area that recycles this type of product. Thank you for considering the environment.

125 VAC 60 Hz **Type: D30A**
Questions or comments: Call 800-736-4648 in or visit RemingtonProducts.com.

Dist. by: Empower Brands, LLC, Middleton, WI 53562

© Registered Trademark and ™ Trademark of Empower Brands, LLC
© 2022 Empower Brands, LLC. All rights reserved. 9/22 29413

Made in China.

T22-7002879-B

