

REMINGTON®



Use and Care Guide EP-7010

Register Your New Product Today!

By registering your new Remington® product you will receive these important benefits:
Proof of ownership • Product protection • Product registration • Special offers
Register online at: RemingtonProducts.com

IMPORTANT SAFETY INSTRUCTIONS

When using an electrical appliance, basic precautions should always be observed, including the following. Read all instructions before using this appliance.

READ ALL INSTRUCTIONS BEFORE USING.

KEEP AWAY FROM WATER.

DANGER

As with most electrical appliances, electrical parts are electrically live even when the switch is off. To reduce the risk of death by electric shock:

- Do not reach for an appliance that has fallen into water. Unplug immediately.
- Do not use while bathing or in the shower.
- Do not place or store appliance where it can fall or be pulled into a tub or sink.
- Do not place in or drop into water or other liquid.
- Always unplug immediately after using.
- Always unplug this appliance before cleaning.

WARNING

To reduce the risk of burns, fire, electric shock or injury to persons:

- An appliance should never be left unattended when plugged in.
- Close supervision is necessary when this appliance is used by, on, or near children or persons with certain disabilities.
- Use this appliance only for its intended use as described in this manual. Do not use attachments not recommended by manufacturer.
- Never operate this appliance if it has a damaged cord or plug, if it is not working properly, if it has been dropped or damaged, or dropped into water.
- Keep the cord away from heated surfaces. Do not wrap the cord around the appliance.
- Never drop or insert any object into any opening.
- Do not use outdoors or operate where aerosol (spray) products are being used or where oxygen is being administered.
- Do not use this appliance with a damaged or broken disc as injury may occur.

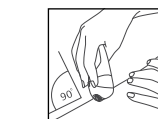
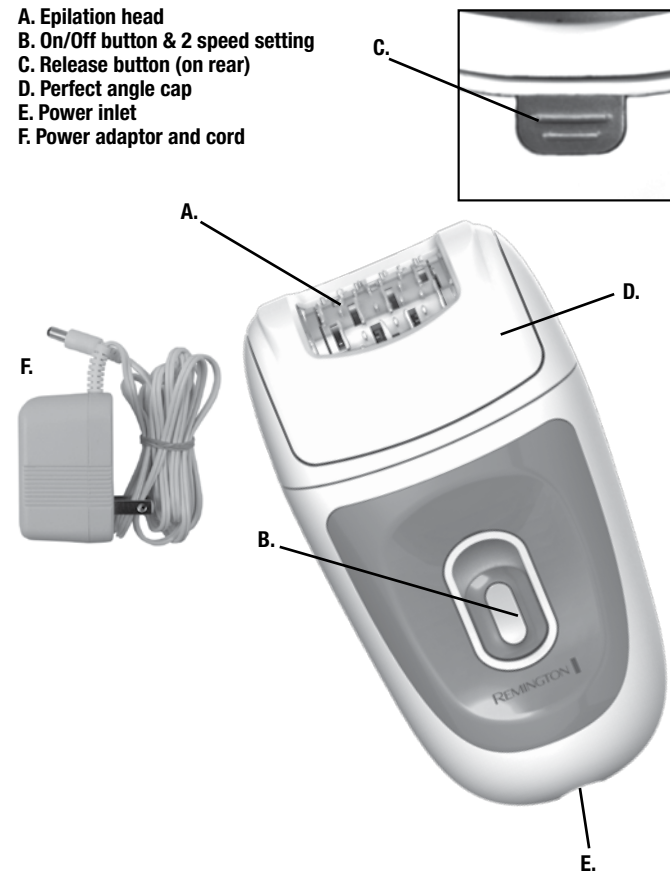
- Always store your appliance and cord in a moisture-free area. Make sure your cord is disconnected from the appliance.
- Make sure unit is "off" before plugging in, always attach plug to appliance first, then to outlet. To disconnect, turn all controls to "off", then remove plug from outlet, then detach power cord from the appliance for storage.

- For household use only.
- The power unit is intended to be correctly oriented in a vertical or floor mount position.

SAVE THESE INSTRUCTIONS

Product Features

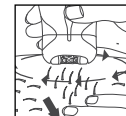
- A. Epilation head
- B. On/Off button & 2 speed setting
- C. Release button (on rear)
- D. Perfect angle cap
- E. Power inlet
- F. Power adaptor and cord



How to Use

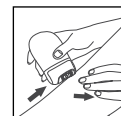
- Before epilating, make sure that your skin is clean, dry and free from creams or oils.
- Rub the skin in the area to be epilated to lift short hairs to optimize hair removal.
- Turn the epilator on to the desired speed. Low is recommended for fine hair and high is recommended for coarse hair or stronger hair growth.
- Using your free hand, hold the skin taut to make the hairs stand upright.
- Position the epilator handle so that the stainless steel tweezers are closed flat against the skin and at 90° angle as shown. This is your optimal hair removal angle. The Remington® epilation head is designed with a staggered tweezer system to ensure maximum tweezing coverage within the area of hair removal.

- Using small circular motions, slowly and gently glide the epilator over the skin. This circular motion is the most effective method and makes the process more comfortable. Alternatively, guide the epilator in a slow, continuous movement against the hair growth.
- Repeat within each area until all unwanted hair is removed.
- After epilating, turn the epilator off.



Arm/Leg Epilation

Epilate from the lower arm/leg and slowly move upwards. To epilate behind the elbow/knee, keep the arm/leg straight to stretch the skin.



Underarms and Bikini

Please be aware that these areas are particularly sensitive. However this sensitivity will reduce after repeated usage.



For more comfort, ensure that the skin is held taut and that the hair is at the optimum length of .08-0.2" or 2-5mm. If it has been an extended period of time since you have removed hair, trim the hair with a Remington® bikini trimmer or precision trimmer before epilation.



When epilating the underarm area, raise your arm so that the skin is stretched. Guide the epilator in circular movements. Avoid using substances which may cause irritation, such as deodorants, directly after epilation (preferably overnight).

Caution:

- For your protection your epilator may slow down or even stop if pressed too firmly against the skin.
- Do not use the epilating head on irritated skin or skin with varicose veins, rashes, spots, moles or wounds without consulting a doctor. People with reduced immune response e.g. during pregnancy, or people who suffer from diabetes mellitus, hemophilia or immunodeficiency should also consult their doctor before using this product.
- For hygiene reasons do not let another person use your epilator. It is recommended for use by one person only.

Operating Instructions:

1. Securely plug the adaptor into the epilator.
 2. Plug the adaptor into an electrical outlet and the epilator is ready to use.
- This epilator can ONLY be used corded.

Usage Tips

Helpful Hints:

If you are new to epilation systems, you may experience some initial discomfort. This decreases with each use of the product. With cumulative use of the Remington® epilation system, you may find a decrease in both the quantity and the density of hair growth.

Your new epilator is designed to make the removal of unwanted hair as efficient, gentle and easy as possible. The perfect angle cap ensures you are using your epilator at the optimal angle for tweezing. The rotary tweezers catch even the shortest hairs (minimum length .02"/.5mm) and pull them out by the root. The hair that grows back should be soft and thin.

Epilating leaves your skin smooth and hair-free for several weeks.

■ Using an epilator may cause reddening or irritation of the skin. This is a normal reaction that will quickly disappear. However, you should consult your doctor if the irritation has not disappeared within three days.

■ All methods of hair removal from the root can result in ingrown hairs depending on the condition of the skin and hair. Regular exfoliation helps to prevent ingrown hairs. In some cases inflammation of the skin could occur when bacteria penetrate the skin (e.g. when sliding the appliance over the skin). Thorough

cleaning of the epilation head before each use will minimize the risk of infection.

■ When using an epilator for the first time it is best to try it on a small area to get used to the process of epilation.

■ The optimum length for hair removal is between .08-0.2" or 2-5mm. Epilation is easier and more comfortable with this hair length.

■ Take a warm bath or shower before epilating and exfoliate to remove dead skin cells. This will make your skin more pliable, making the epilation process less uncomfortable.

■ Your skin should be clean, dry and free of creams or oils.

For the Best Results:

■ Best results are achieved by gliding the epilator lightly over the skin in **short, circular motion-sweeping the head up and away** at the end of each pass. The tweezers should gently glide over the skin, barely touching it. If you press too hard, a built-in safety measure slows or stops the tweezers altogether.

■ Repeat the motion within the same area a few times until all hair is removed. The duration of use depends on the quantity and density of the hair. After several months of cumulative use, there will be less hair and those remaining will be thinner. There will also be a longer interval between re-growth of the hair.

■ You may want to epilate in the evening so that any possible reddening can disappear overnight.

■ After use, you can use a body cream or aloe lotion to soothe the skin and reduce skin irritation.

■ Regularly exfoliate after epilation to avoid ingrown hairs.

■ For best results, the unit should be cleaned after every use.

■ The Remington® epilator can be used safely on the bikini line. If the bikini line hair is too long, trim first with either scissors or a trimmer. Afterwards, you can use the epilator to remove the hair from the root for

weeks for a smooth and beautiful bikini line.

■ Your Remington® epilator can be used safely to remove a single hair from the body.

■ Use on face is not recommended.

■ You should initially use your epilator about once a week. Touch-ups will contribute to the weakening of your hair and will keep your legs constantly smooth. Removing hair once a week is recommended particularly for women with sensitive skin because the process is gentle and only takes a few minutes.

Cleaning and Maintenance

Storage

Never wrap the cord around the epilator, since this will cause the cord to wear prematurely and break, thus voiding warranty. Handle the cord carefully and avoid twisting, jerking or straining it, especially at cord connections.

Caring For Your Epilator

To ensure long lasting performance of your epilator, clean the head assembly regularly.

CLEANING THE EPILATION HEAD AFTER EACH USE

■ Ensure the epilator is turned off and disconnected from the outlet.

■ Hold sides of epilator head and lift cap at rear away from tweezing barrel.

■ Turn the head assembly upside down.

■ Brush the accumulated hair from the tweezers by turning the barrel manually.

■ The epilator head can be removed and rinsed for cleaning. For optimal cleaning, brush accumulated hairs from tweezers before rinsing. To remove epilator head press release button on rear of epilator to release head.



■ Allow to dry completely before reattaching the cap.

NOTE: The body of the epilator is NOT washable.

DO NOT SUBMERGE IN WATER.

CAUTION:

Epilator body: NOT suitable for cleaning under water.

TO REMOVE RESIDUE

To remove residue from the stainless steel tweezers of the epilator head, dampen a swab with alcohol. Gently run the swab over the tweezers until the residue has been removed.

CAUTION: Make sure that the cotton swab is not soaked in alcohol as this may damage the epilator head.

NOTE: This appliance does not contain any user-serviceable parts.

Warranty

Limited Two-Year Warranty

Spectrum Brands, Inc. warrants this product against any defects that are due to faulty material or workmanship for a two-year period from the original date of consumer purchase. This warranty does not include damage to the product resulting from accident or misuse.

If the product should become defective within the warranty period, we will replace it free of charge. Return your product and sales receipt with your name, address and day time phone number to: Remington Returns Center, 507 Stokely Dr., P.O. Box 1, Deforest, WI 53532. For more information call 800-736-4648 in the U.S. and Canada or visit RemingtonProducts.com.

KEEP ORIGINAL SALES RECEIPT AS PROOF OF PURCHASE FOR WARRANTY PURPOSES.

This warranty does not cover products damaged by the following:

- Accident, misuse, abuse or alteration of the product
- Servicing by unauthorized persons
- Use with unauthorized accessories
- Connecting it to incorrect current and voltage
- Wrapping cord around appliance causing premature wear and breakage
- Any other conditions beyond our control

No responsibility, obligations, or liability is assumed for the installation or maintenance of this product.

SPECTRUM BRANDS, INC. SHALL NOT BE RESPONSIBLE FOR ANY INCIDENTAL, SPECIAL OR CONSEQUENTIAL DAMAGES RESULTING FROM THE USE OF THIS PRODUCT. ALL IMPLIED WARRANTIES, INCLUDING BUT NOT LIMITED TO IMPLIED WARRANTIES OF FITNESS AND MERCHANTABILITY, ARE LIMITED IN DURATION TO TWO YEARS FROM DATE OF ORIGINAL PURCHASE.

This warranty gives you specific legal rights and you may also have other rights which vary from state to state or province to province. Some states do not allow the exclusion or limitation of incidental, special or consequential damages.

Spectrum Brands, Inc. Money-back Offer

If within 30 days after you have purchased your Remington® branded product, you are not satisfied and would like a refund, return it with the sales slip indicating purchase price and date of purchase to the retailer from whom it was purchased. Spectrum Brands, Inc. will reimburse all retailers who accept the product within 30 days from the date of purchase. If you have any questions concerning the money-back guarantee, please call 800-736-4648 in the U.S. and Canada or visit RemingtonProducts.com.

Remington Guarantees Satisfaction After 30 Days!

Remington 60-Day Money Back Guarantee*

If within 60 days after purchasing any Remington® branded product, you are not completely satisfied and would like a refund, return it with the original dated sales receipt directly to Remington and receive a full refund.** For questions concerning the money-back guarantee, please call 800-736-4648 in the U.S. and Canada.

*Applies to U.S. and Canadian customers' returns only.

**Terms and conditions apply.

Terms and Conditions

1. Refund will be in the form of a check issued in U.S. Dollars and will be provided only if all Terms and Conditions are met.
2. The following items must be returned to Remington and postmarked no later than 60 days after purchase of the Remington® branded product:
 - a. The Remington® product;
 - b. The original sales receipt indicating price and date purchased; and
 - c. The completed 60-day money back guarantee form located at **RemingtonProducts.com/60day**.
3. In addition, Remington, in its discretion, must determine that the returned product was used in accordance with the instruction booklet (included with the product at the time of purchase).
4. Returns should be mailed prepaid (no collect returns accepted) to:
Remington 60-Day MBG
507 Stokely Drive, Box 1
DeForest, WI 53532
5. Refund does not include postage costs for the return of the product, but will include applicable taxes paid by customer, if any.
6. No responsibility will be accepted for late, lost, stolen, misdirected or damaged product.
7. Please allow 4-6 weeks to receive your refund by check.

Questions or comments: Call 800-736-4648 in the U.S. and Canada or visit **RemingtonProducts.com**.

Dist. by: Spectrum Brands, Inc., Middleton, WI 53562

Dist. by: Spectrum Brands Canada Inc.
255 Longside Drive, Unit 101
Mississauga, ON L5W 1L8

© Registered Trademark of Spectrum Brands, Inc.
© 2017 Spectrum Brands, Inc. 12/16 16821-00

Made in China.

100-240Vac 50/60 Hz

T22-0000635-A

Contains a listed adaptor