

# REMINGTON®

EST. NEW YORK 1937



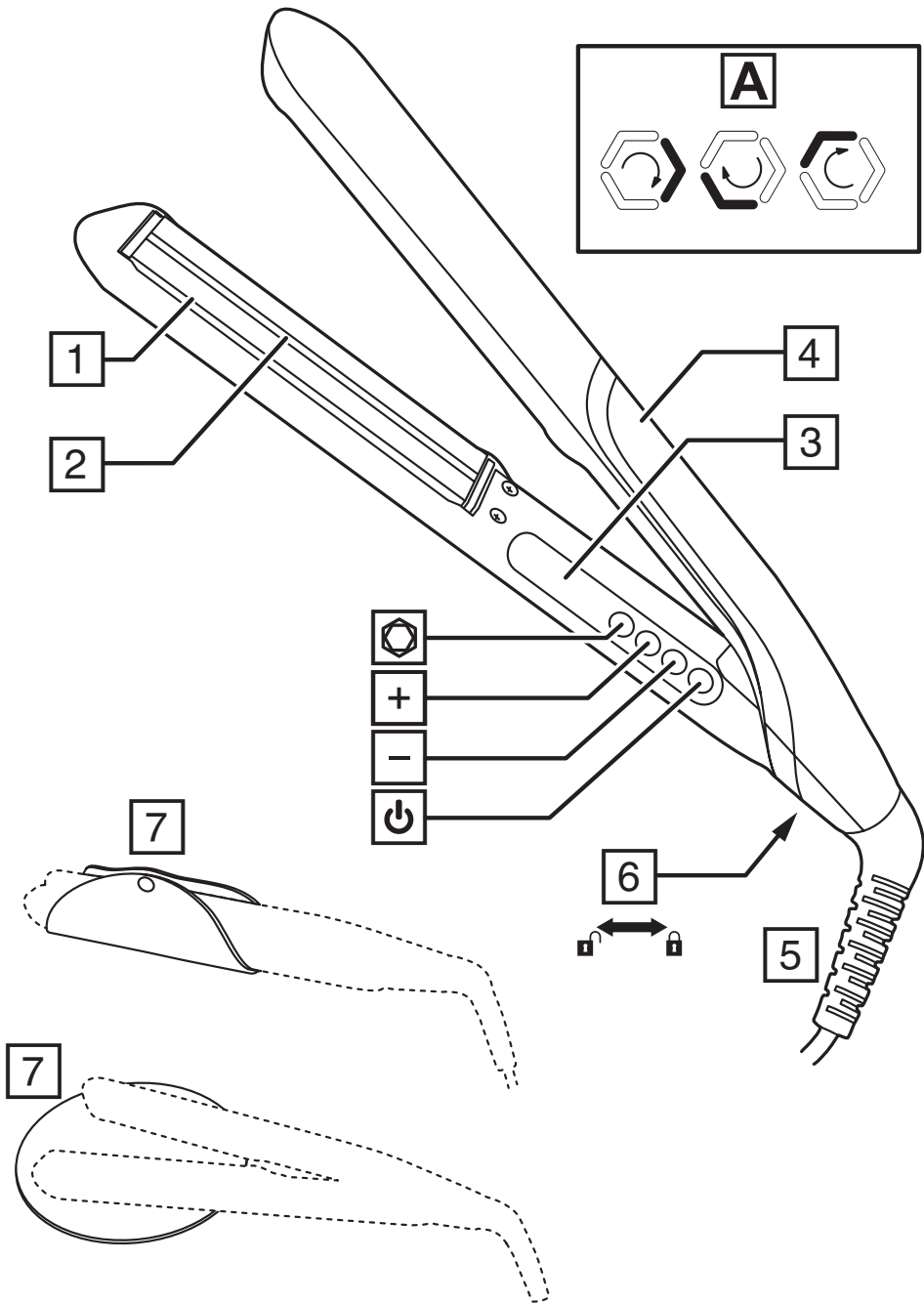
## S29A Series

 [RemingtonProducts.com](http://RemingtonProducts.com)

**Register Your New Product Today!**

By registering your new REMINGTON® product, you will receive special offers.

**Register online at [RemingtonProducts.com](http://RemingtonProducts.com)**



---

## IMPORTANT SAFETY INSTRUCTIONS

---

When using electrical appliances, especially when children are present, basic safety precautions should always be followed, including the following:

### **READ ALL INSTRUCTIONS BEFORE USING. KEEP AWAY FROM WATER.**

## **DANGER**

**As with most electrical appliances, electrical parts are electrically live even when the power switch is off. To reduce the risk of death by electric shock:**

- Always unplug this appliance from the electrical outlet immediately after using.
- Do not use while bathing or in the shower.
- Do not place or store this appliance where it can fall or be pulled into a tub or sink.
- Do not place in or drop into water or other liquid.
- Do not reach for an appliance that has fallen into water. Unplug it immediately.
- Unplug this appliance before cleaning it.

## **WARNING**

**To reduce the risk of burns, fire, electric shock, or injury to people:**

- An appliance should never be left unattended when it is plugged in.
- Close supervision is necessary when this appliance is used by, on, or near children or individuals with certain disabilities or special needs.
- Use this appliance only for its intended use as described in this manual. Do not use attachments not recommended by manufacturer.
- Never operate this appliance if it has a damaged cord or plug, if it is not working properly, if it has been dropped or damaged, or if it has been dropped into water.
- Keep the cord away from heated surfaces. **Do not wrap the cord around the appliance.**
- Never use while sleeping.
- Never block the air openings of the appliance or place it on a soft surface, such as a bed or couch, where the air openings may be blocked. Keep the air openings free of lint, hair, and the like.
- Never drop or insert any object into any of the appliance's openings.
- Do not use outdoors or operate where aerosol (spray) products are being used or where oxygen is being administered.
- Do not use an extension cord.
- This appliance is hot when in use. Do not let eyes or bare skin touch heated surfaces.
- Do not place the heated appliance directly on any surface while it is hot or plugged in.
- This appliance has a polarized plug (one blade is wider than the other). As a safety feature, this plug will fit in a polarized outlet only one way. If the plug does not fit fully in the outlet, reverse the plug. If it still does not fit, contact a qualified electrician. Do not attempt to defeat this safety feature.
- Always store this appliance and cord in a moisture-free area. Do not store it in temperatures exceeding 140°F (60°C).

- This appliance is for household use only.
- Do not plug or unplug this appliance when your hands are wet.



**KEEP AWAY FROM CHILDREN**

## **SAVE THESE INSTRUCTIONS**

---

### **PARTS**

- |                                   |   |
|-----------------------------------|---|
| 1. Advanced ceramic coated plates | 7. 2-in-1 protective storage sleeve and styling mat |
| 2. StyleAdapt™ Sensor             | Controls:   |
| 3. Display                        | ⏻ On/off button                                     |
| 4. StyleAdapt™ indicator          | +/- Temperature functions                           |
| 5. Swivel cord                    | ⊗ StyleAdapt™ button                                |
| 6. Hinge lock                     |   |

---

### **ADDITIONAL FEATURES**

- Fast heat up—ready to use in 15 seconds.
- Automatic safety shut off – this unit will switch itself off if no button is pressed or it is left on after 60 minutes.
- Multivoltage: for home or abroad.
- Styling mat - for placing your styler onto between uses.


---

### **INSTRUCTIONS FOR USE**


- Before use, ensure the hair is clean, dry and tangle-free.
- For extra protection use a heat protection spray.
- Hairsprays contain flammable material - do not use while using this product.
- Section the hair prior to styling. Style the lower layers first.

1. Plug your styler into the mains power supply.
2. Press the on (⏻) button to switch on.
3. When it is ready to use, your styler will beep three times and the display will stop flashing.

## StyleAdapt™ Mode

1. When first switched on your styler will be in StyleAdapt™ mode 1. The StyleAdapt™ indicator will be fully lit up and **StyleAdapt 1** will be shown on the display.
  2. Working on one section at a time, run your styler through the entire length of your hair without stopping.
  3. After each pass through your hair, the StyleAdapt™ indicator will spin (fig. A) indicating that your styler is learning about your hair and adjusting the plate temperature to a heat that is personalised to you. The temperature changes are not shown on the display but happen quickly and automatically during styling.
- If you are sharing your styler select StyleAdapt™ mode 2. This ensures that when the styler is used by someone else, it doesn't change what it has learned about your hair. To select, press the  button until **StyleAdapt 2** is shown on the display.


## Manual Mode

1. To override the StyleAdapt™ mode and use as a standard styler, press the  button several times until the display shows the temperature (e.g. 160°C) and the StyleAdapt™ indicator goes off. Note that in manual mode, your styler will no longer be learning about your hair and adapting the heat.
2. Select the appropriate temperature for your hair using the controls on the side of the product. Start styling on the lower temperatures first.
3. The '+' button will increase the temperature, the '-' button will decrease the temperature.

## Recommended Temperatures

Temperature	Hair type
300°F - 340°F	Thin / fine, damaged or bleached hair
360°F - 400°F	Normal, healthy hair
410°F - 450°F	Thick, very curly and difficult to style hair

**Caution:** the hottest temperatures should only be used by experienced stylists

4. Working on one section at a time, run the straightener through the entire length of the hair without stopping.
5. To re-activate StyleAdapt™ mode press the  button until **StyleAdapt 1** is shown on the display and the StyleAdapt™ indicator is illuminated. Your styler will now be learning about your hair and adapting the heat again.
6. After use, press and hold the off button for two seconds to turn off then unplug the appliance.

## Memory Function

- Each time you use your styler it will automatically set itself to the last setting used.

---

## STORAGE, CLEANING AND MAINTENANCE

---

### Let the appliance cool down before cleaning and storing away

- Wipe all surfaces with a damp cloth.
- Don't use harsh or abrasive cleaning agents or solvents.
- Wrap the styling 2-in-1 protective storage sleeve and styling mat around the product to store.

The plates can be locked together for easy storage:

To lock, push the hinge lock up to the locked position.

To unlock, slide the hinge lock to the unlocked position.

**NOTE:** Do not heat the unit in the locked position.

---

## WARRANTY

---

### Limited Five-Year Warranty

Empower Brands, LLC warrants this product to the original purchaser against any defects that are due to faulty material or workmanship for a five-year period from the original date of consumer purchase. This warranty does not include damage to the product resulting from accident or misuse. If the product should become defective within the warranty period, we will replace it free of charge.

Keep your sales receipt and call 800-736-4648 in the U.S. or Canada or contact us at:

[contactus@remingtonproducts.com](mailto:contactus@remingtonproducts.com) for warranty information.

### KEEP ORIGINAL SALES RECEIPT AS PROOF OF PURCHASE FOR WARRANTY PURPOSES.

This warranty does not cover products damaged by the following:

- Accident, misuse, abuse or alteration of the product
- Servicing by unauthorized persons
- Use with unauthorized accessories
- Connecting it to incorrect current and voltage
- Any other conditions beyond our control

No responsibility, obligation, or liability is assumed for the installation or maintenance of this product.

**EMPOWER BRANDS, LLC SHALL NOT BE RESPONSIBLE FOR ANY INCIDENTAL, SPECIAL OR CONSEQUENTIAL DAMAGES RESULTING FROM THE USE OF THIS PRODUCT. ALL IMPLIED WARRANTIES, INCLUDING BUT NOT LIMITED TO IMPLIED WARRANTIES OF FITNESS AND MERCHANTABILITY, ARE LIMITED IN DURATION TO THREE YEARS FROM DATE OF ORIGINAL PURCHASE.**

This warranty gives you specific legal rights and you may also have other rights which vary from state to state. Some states do not allow the exclusion or limitation of incidental, special or consequential damages.

**This warranty shall not be valid where it is contrary to U.S. and other applicable laws, or where the warranty would be prohibited under any economic sanctions, export control laws, embargos, or other restrictive trade measures enforced by the United States or other applicable jurisdictions. This includes, without limitation, any warranty claims implicating parties from, or otherwise located in, Cuba, Iran, North Korea, Syria and the disputed Crimea region.**

## **Empower Brands, LLC Money-Back Offer**

If within 30 days after you have purchased your Remington® branded product from an authorized source, you are not satisfied and would like a refund, return it with the sales receipt indicating purchase price and date of purchase to the retailer from whom it was purchased. Empower Brands, LLC will reimburse all retailers who accept the product within 30 days from the date of purchase. If you have any questions concerning the money-back guarantee, please call 800-736-4648 in the U.S.

### ***Remington Guarantees Satisfaction After 30 Days!***

#### **Remington 60-Day Money Back Guarantee<sup>1</sup>**

If, within 60 days after purchasing any Remington® product, you are not completely satisfied and would like a refund, keep your receipt and contact us at [contactus@remingtonproducts.com](mailto:contactus@remingtonproducts.com) or call 800-736-4648 in the U.S. or Canada.<sup>2</sup>

<sup>1</sup>Applies to U.S. and Canadian customers' returns only.

<sup>2</sup>Terms and conditions apply.

1. Refund will be in the form of a check issued in U.S. dollars and will include applicable taxes, if any, paid by customer.
2. Please allow 4–6 weeks to receive your refund by check.



This device complies with part 15 of the FCC Rules. Operation is subject to the following two conditions: (1) This device may not cause harmful interference, and (2) this device must accept any interference received, including interference that may cause undesirable operation.  
CAN ICES-003 (B)/NMB-003 (B)

Please do not throw this product away with normal household waste.  
If possible, take it to an official collection point in your area that recycles this type of product. Thank you for considering the environment.

## TYPE: S29A

**120Vac 60Hz**

**Questions or comments:** Call 800-736-4648 in the U.S.  
or visit **RemingtonProducts.com**.

T22-7003173 Version 12 /23

Dist. by Empower Brands, LLC, Middleton, WI 53562

® Registered Trademark and ™ Trademark of Empower Brands, LLC

© 2024 Empower Brands, LLC. All rights reserved.

**Made in China**

