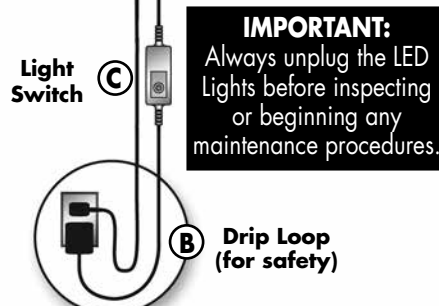
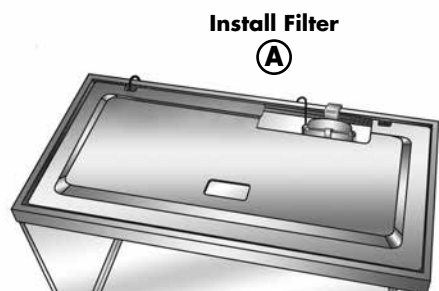
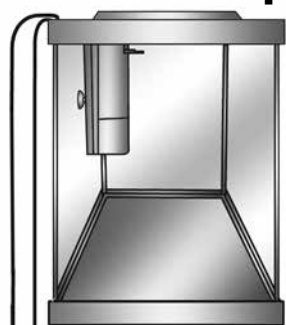


4 Hood & Filter Placement and Start Up

- Install Filter so it lines up beneath the Hood cutout.
- Plug AC adapter into power outlet. Make a Drip Loop for safety.
- Press switch to cycle auto changing color fusion LEDs. Press again to pause at desired color. Press and hold to turn off.



IMPORTANT:
Always unplug the LED Lights before inspecting or beginning any maintenance procedures.

Troubleshooting Guidelines

If the LED lights fall into the water: This LED light is waterproof. Simply remove the LED Light from the water and attach it to the frame using the LED frame clip.

LIMITED ONE YEAR WARRANTY: Within one year from the date of original purchase (shown on your receipt), we will repair or replace, at our option, any of the following components which are deemed defective in workmanship or materials. This includes: LED Lights, Hood, Bubble Tube or Air Pump.

Please return the suspect component(s) together with proof of purchase (your receipt):

Call (800) 526-0650 for return authorization and shipping address.

Damage or injuries resulting from negligence or misuse are not covered by this warranty. Incidental or consequential damages are specifically excluded.*

This warranty gives you specific legal rights. You may also have other rights which vary from state to state.

*Because some states do not allow the exclusion of incidental or consequential damages, this exclusion may not apply to you.

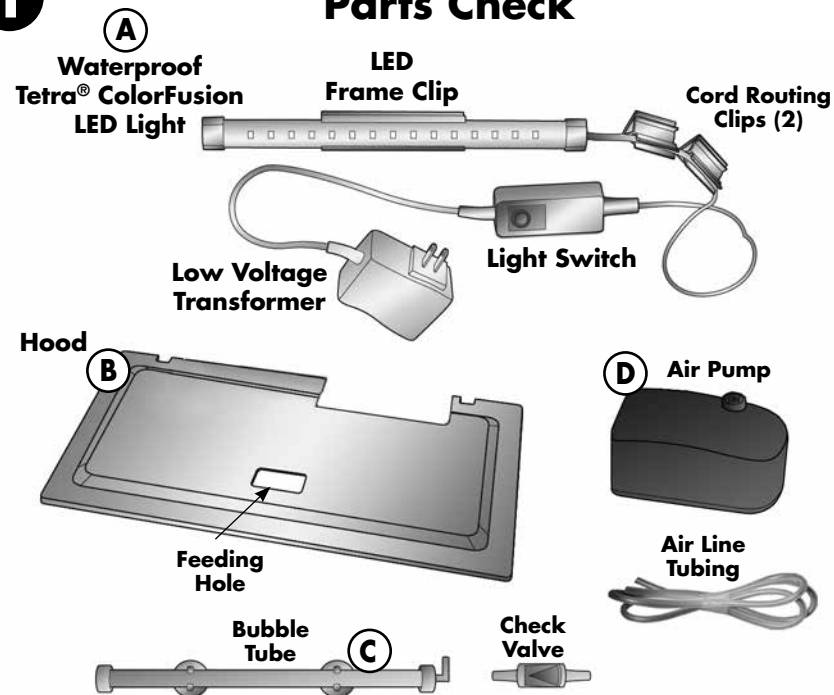
Distributed by United Pet Group, Inc. (UPG)
3001 Commerce St., Blacksburg, VA 24060
®Registered Trademark and ™Trademark of
United Pet Group, Inc. or one of its affiliates.
©2014 UPG

02/14 P/N R08307 Rev. A

Start Here - Tetra® ColorFusion Aquarium Kits

Quick Setup Guide for Kit Sizes: 5 and 10 gallons

1 Parts Check



Replacement Parts List

KEY	ITEM #	DESCRIPTION	QUANTITY
A	R07016	6" Tetra® ColorFusion LED Light (5g Kit)	1
A	R07014	8" Tetra® ColorFusion Light (10g Kit)	1
B	R03942	16" x 9" Hood (5g Kit)	1
B	R03943	20" x 10" Hood (10g Kit)	1
C	R07017	Bubble Tube with Check-Valve	1
D	R07015	Air Pump with Air Line Tubing	1

Questions or Missing Parts Call Customer Service (800) 526-0650

M-F 7:30 a.m. - 5:30 p.m. (Eastern Time) www.tetra-fish.com

© 2014 United Pet Group, Inc.

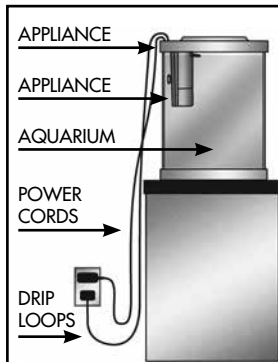
IMPORTANT SAFEGUARDS

WARNING: To guard against injury, basic safety precautions should be observed, including the following:

READ AND FOLLOW ALL SAFETY INSTRUCTIONS

DANGER: To avoid possible electric shock, special care should be taken since water is employed in the use of aquarium equipment. For each of the following situations, do not attempt repairs by yourself; return the appliance to an authorized service facility for service or discard the appliance:

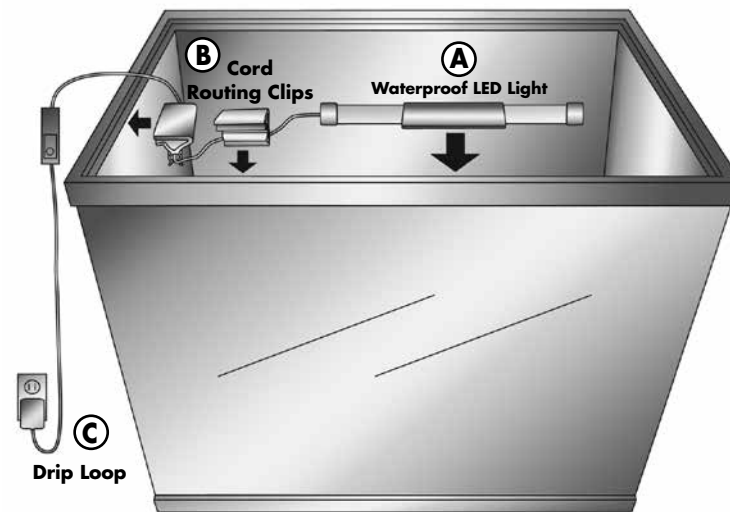
- A.** Carefully examine the appliance after installation. It should not be plugged in if there is water on parts not intended to be wet.
 - B.** Do not operate any appliance if it has a damaged cord or plug, or if it is malfunctioning or has been dropped or damaged in any manner.
 - C.** To avoid the possibility of the appliance plug or receptacle getting wet, position aquarium stand and tank to one side of a wall-mounted receptacle to prevent water from dripping onto the receptacle or plug. A drip loop, shown in the figure below, should be arranged by the user for each cord connecting an aquarium appliance to a receptacle. The drip loop is that part of the cord below the level of the receptacle, or the connector if an extension cord is used, to prevent water traveling along the cord and coming in contact with the receptacle.
 - D.** If the transformer or receptacle does get wet, DON'T unplug the cord. Disconnect the fuse or circuit breaker that supplies power to the appliance. Then, unplug and examine for presence of water in the receptacle.
- Close supervision is necessary when any appliance is used by or near children.
 - To avoid injury, do not contact moving parts or hot parts such as heaters, reflectors, lamp bulbs, and the like.
 - Always unplug an appliance from an outlet when not in use, before putting on or taking off parts, and before cleaning. Never yank cord to pull plug from outlet. Grasp the plug and pull to disconnect.
 - Do not use an appliance for other than intended use. The use of attachments not recommended or sold by the appliance manufacturer may cause an unsafe condition.
 - Do not install or store the appliance where it will be exposed to the weather or to temperatures below freezing.
 - Make sure an appliance mounted on a tank is securely installed before operating it.
 - Read and observe all the important notices on the appliance.
 - If an extension cord is necessary, a cord with a proper rating should be used. A cord rated for less amperes or watts than the appliance rating may overheat. Care should be taken to arrange the cord so that it will not be tripped over or pulled.



2

Install LED Light

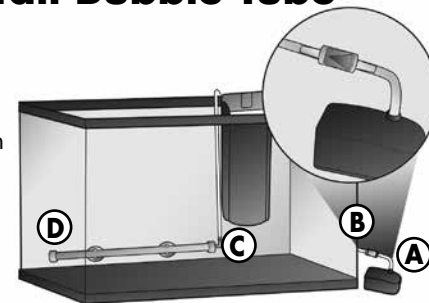
- Clip Waterproof LED Light into the front of the aquarium frame.
- Hide wires with cord routing clips.
- Plug in and make a drip loop for safety.



3

Assemble and Install Bubble Tube

- Cut a 2 inch piece of air line tubing and insert into air pump
- Insert the check-valve into 2 inch tubing as shown, with pointed end facing away from air pump. (Note: The check-valve prevents water from siphoning back from aquarium into the air pump).
- Connect the other end of the check-valve and bubble tube with the long piece of tubing.
- Attach the bubble tube to the inside back wall of aquarium, about 1 to 2 inches from the aquarium bottom. Be sure it is **NOT** positioned directly under the filter, since bubbles entering the filter intake may cause excessive noise.



Always keep the air pump dry. Never put the air pump in the aquarium.

Troubleshooting

If the bubble tube won't turn on or you notice diminished air flow...

- Make sure that the airline tubing is attached to the air pump, check valve, and bubble tube. Make sure check valve is oriented properly.
- Airflow loss is usually caused by a clogged bubble tube. The pores become blocked over time, and the bubble tube should be replaced.
- Replacement bubble tubes can purchased at aquatic retailers and easily cut to size, or can be purchased as replacement parts from United Pet Group Inc.

SAVE THESE INSTRUCTIONS