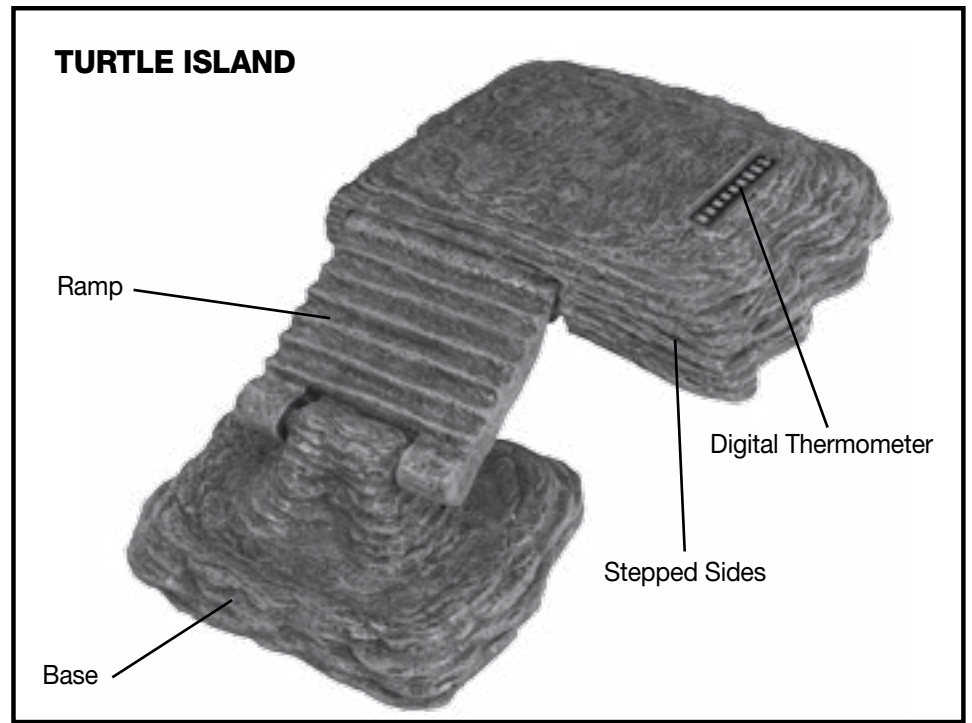
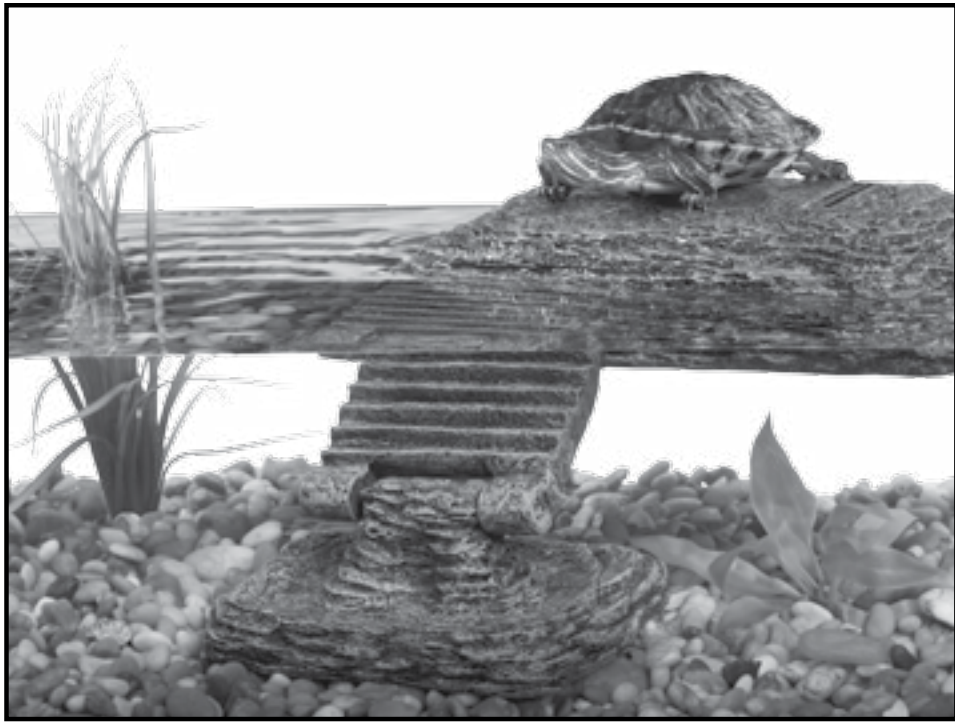




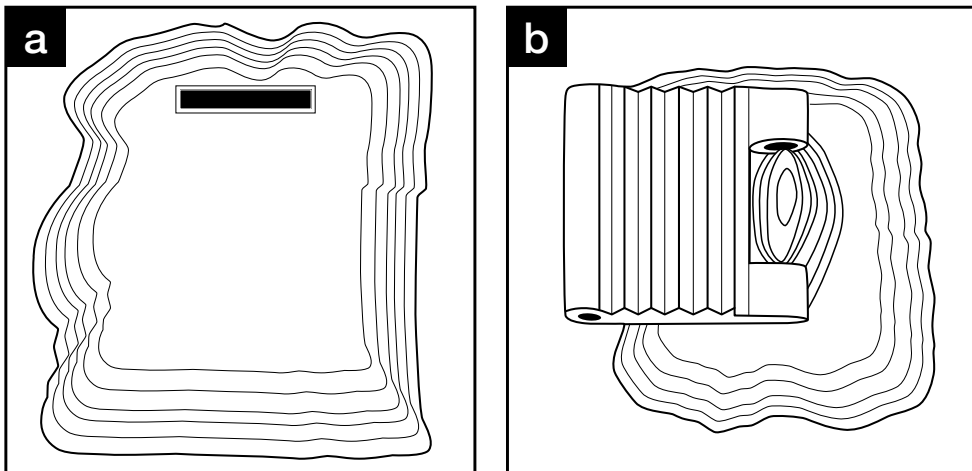
Turtle Island

The TetraFauna Turtle Island can be placed in all standard 20, 29, 40 and 55 gallon aquariums. It will automatically adjust to varying water levels giving your aquatic turtle the perfect area to bask. The easy to read thermometer lets you know what the basking temperature is to guarantee your aquatic turtle is getting the proper amount of heat.

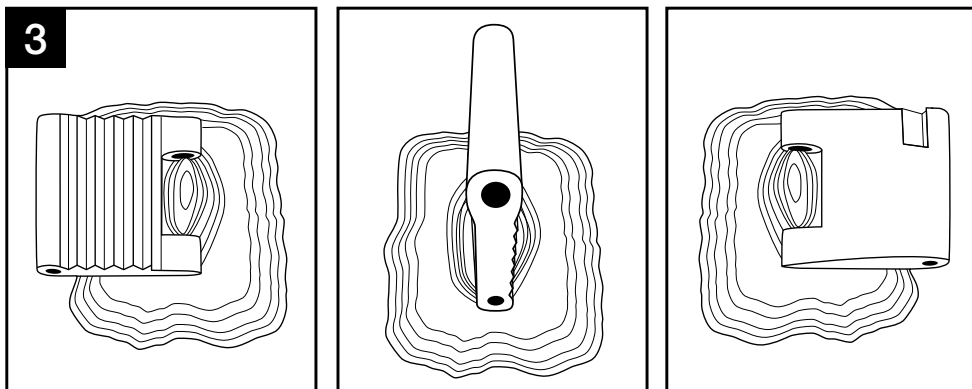


HOW TO ASSEMBLE THE TURTLE ISLAND

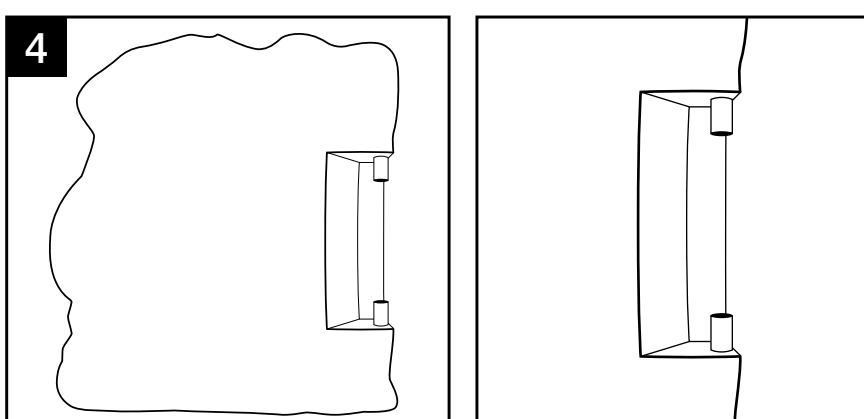
1. Your TetraFauna Turtle Island will come partially assembled. The following instructions will guide you on how to fully assemble the unit. Once it is fully assembled it can be installed on either side of the aquarium, even the middle if the aquarium is large enough. Always ensure your aquatic turtle will have plenty of space to climb on and off of the platform.



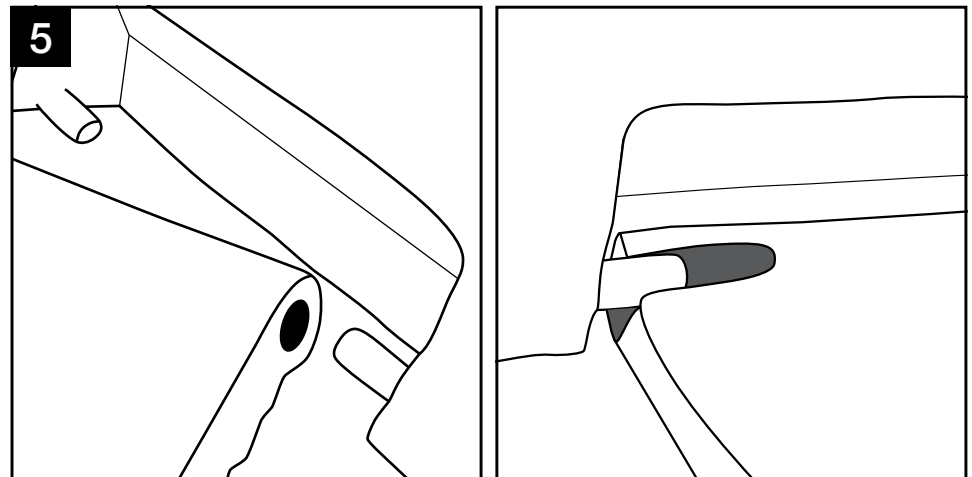
2. Begin the assembly by identifying the parts. The part marked with "a" is the basking Island platform. The part marked with "b" is the climbing ramp and base assembly.



3. Flip the pivoting climbing ramp on the climbing ramp and base assembly so that the elongated notch is facing upward and parallel with the base.

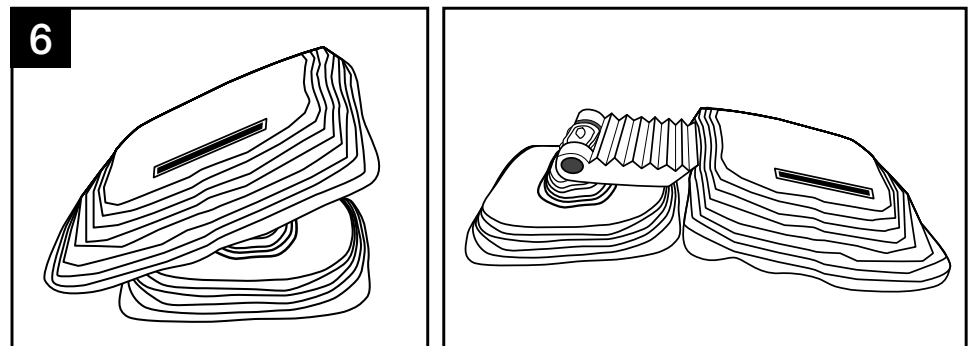


4. Turn the basking Island platform so that bottom is facing upward. Look for the two posts located inside the inset. These will be used to guide and secure the basking Island platform to the climbing ramp and base assembly.



5. Insert the guide post into the standard notch first.

Next slide the other guide post into the elongated notch.



6. Now you have what looks like some sort of whacked out mushroom. Don't worry the space age climbing ramp allows you to straighten this out to resemble what you initially purchased.

Questions? Problems? Missing Parts?

Before returning the product, please call our Customer Care Department at 800-423-6458, Monday-Friday 7:30 a.m. to 5:30 p.m., Eastern USA Time or email us at consumer@tetra-fish.com. Our Customer Care Department is here to provide assistance to help you solve your problem.

United Pet Group, Inc. (UPG)
3001 Commerce Street., Blacksburg, VA 24060-6671, USA
www.tetrafauna.com • 1-800-526-0650
® Registered Trademark of United Pet Group, Inc.
or one of its subsidiaries.
© 2014 UPG
MADE IN CHINA.